

# How Phospholipids Ruin Your LC/MS/MS Analysis

 = The Uninvited Guest 



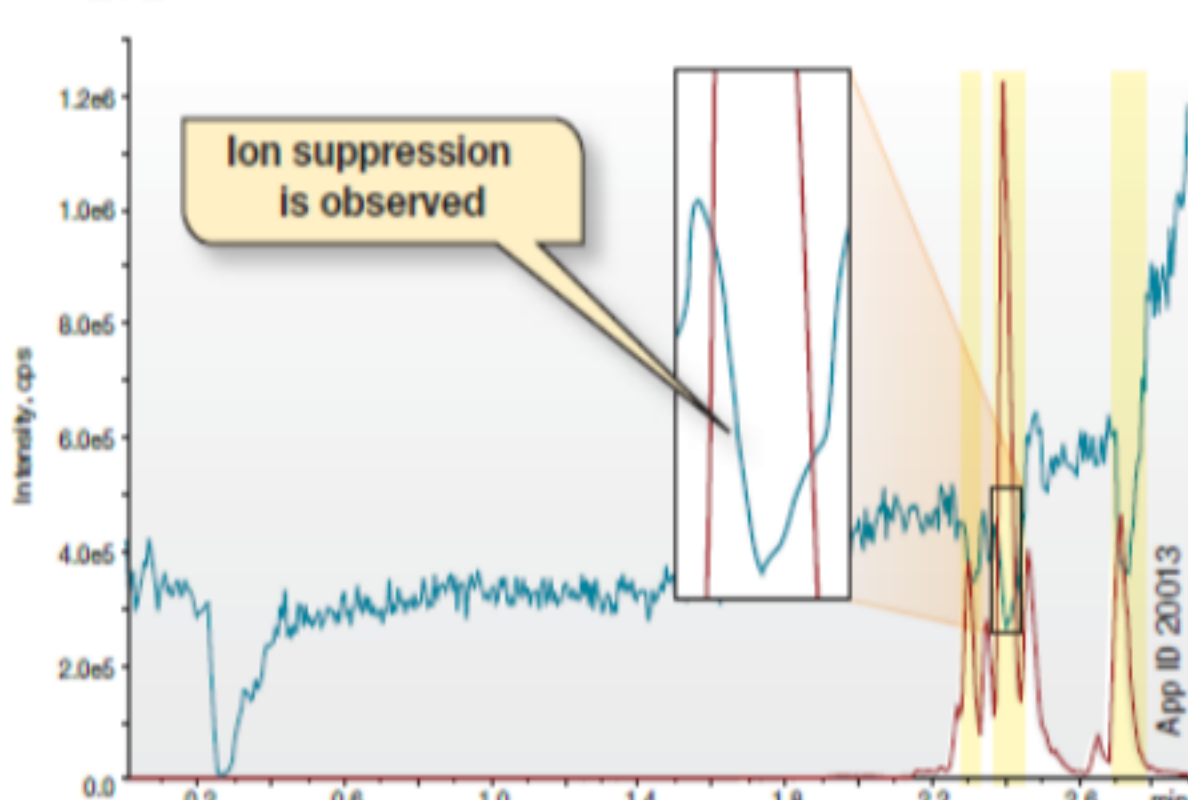
Plasma



Whole Tissue

Phospholipids are present in a majority of bioanalytical samples including plasma and tissue samples. Many different classes of phospholipids exist, the most abundant being phosphatidyl cholines and lysophosphatidyl cholines.

 = The Mass Spec Party Pooper 



Phospholipids are the leading cause of ion suppression in LC/MS/MS analysis of bioanalytical samples.

 = The Silent Column Killer 



Over time phospholipid build up can lead to reduced column lifetime and negative changes in column selectivity also known as phospholipiditis.

## 3 Signs that Your HPLC Column is Suffering from Phospholipiditis

1

Decreased HPLC Column Lifetime



2

Decreased HPLC Column Sensitivity



3

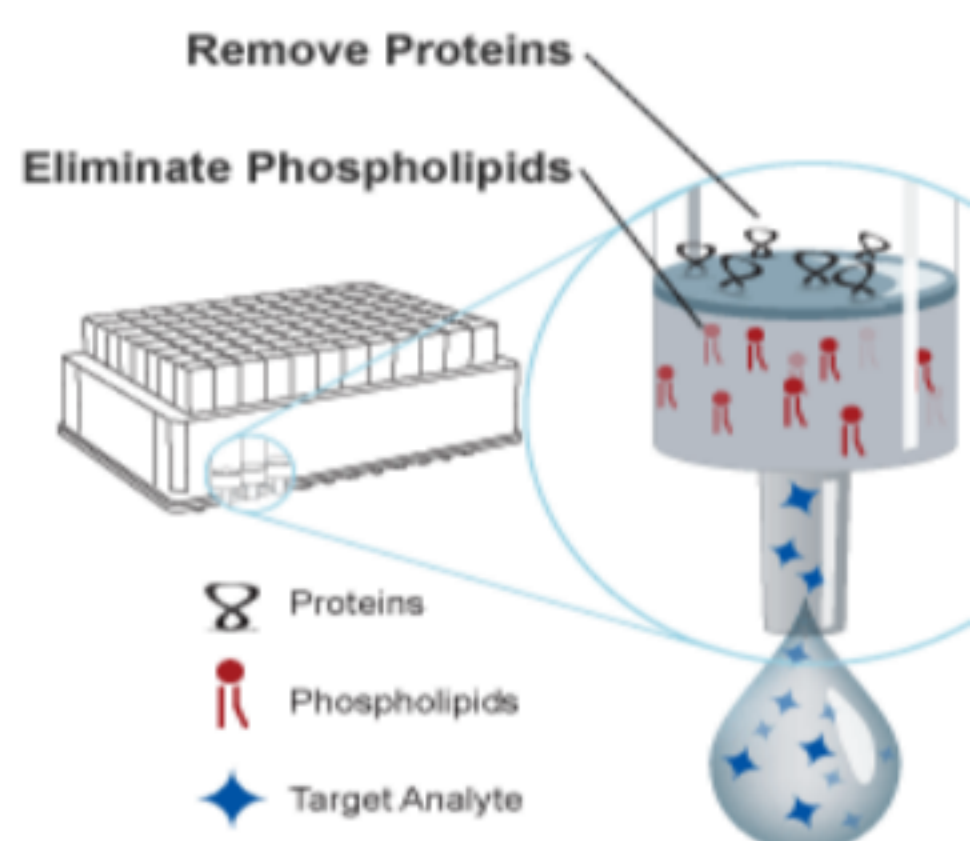
Poor HPLC Column Performance



 Free Your Sample from Phospholipids 

### Phree Phospholipid Removal 96-Well Plates

Phree phospholipid removal 96 well plates are designed to simultaneously remove ion suppressing phospholipids and column clogging proteins. Phree plates are easy to use. One simple method can be used for samples containing acidic, basic, and neutral compounds



  
Phospholipid Removal Plates

Easy Phospholipid Removal

Easy Protein Removal

Improved LC/MS/MS Sensitivity

Liberate your HPLC Column from Phospholipiditis  
Visit: [www.phenomenex.com/phree](http://www.phenomenex.com/phree)