

HPLC Application

ID No.: 1026

Echinacea (Echinacea angustifolia)

Column: Luna® 5 µm C18(2) 100 Å, LC Column 150 x 4.6 mm, Ea

Dimensions: 150 x 4.6 mm ID

Order No: 00F-4252-E0

Elution Type: Isocratic

Eluent A: Acetonitrile/water, 0.1% phosphoric Acid (10:90)

Eluent B: Acetonitrile/water, 0.1% phosphoric Acid (25:75)

Gradient Profile:	Step No.	Time (min)	Pct A	Pct B
	1	0	50	50

Flow Rate: 1.5 mL/min

Col. Temp.: ambient

Detection: UV-Vis Abs.-Variable Wave.(UV) @ nm (ambient)

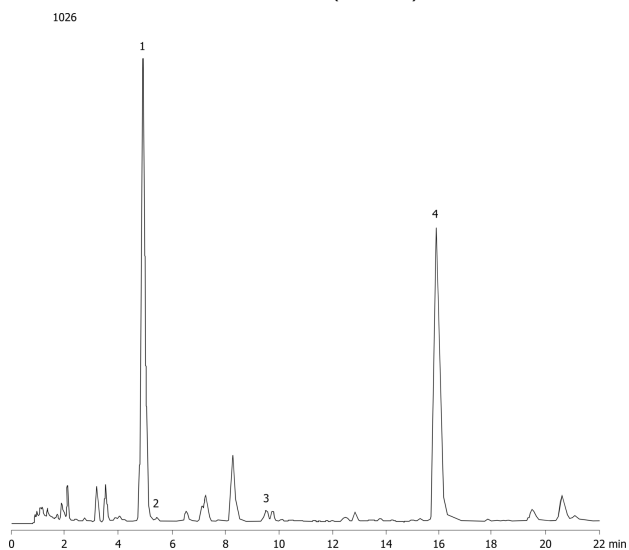
Analyst Note: SecurityGuard™ Guard Cartridge System extends column lifetime.

- SecurityGuard Cartridges, C18 4 x 3.0mm, 10/Pk Part No.: AJ0-4287

- Holder Part No.: KJ0-4282 (rev 0902)



Products used in this application:



ANALYTES:

- 1 Caffeic acid
- 2 Chlorogenic acid
- 3 Echinacoside
- 4 Cichoric acid

