

Saw Palmetto Berry (Fatty Acid Methyl Esters)

Column: Zebtron[™] ZB-WAX, GC Cap. Column 30 m x 0.32 mm x 0.25 μm, Ea

Phase: Polyethylene Glycol (PEG)

Dimensions: 30 meters x 0.32 mm x 0.25 μm

Order No: 7HM-G007-11

Oven Profile: 70°C for 5min to 200°C @ 10°C/min (hold 10min)

Carrier Gas: Constant Flow Helium, 1 mL/min

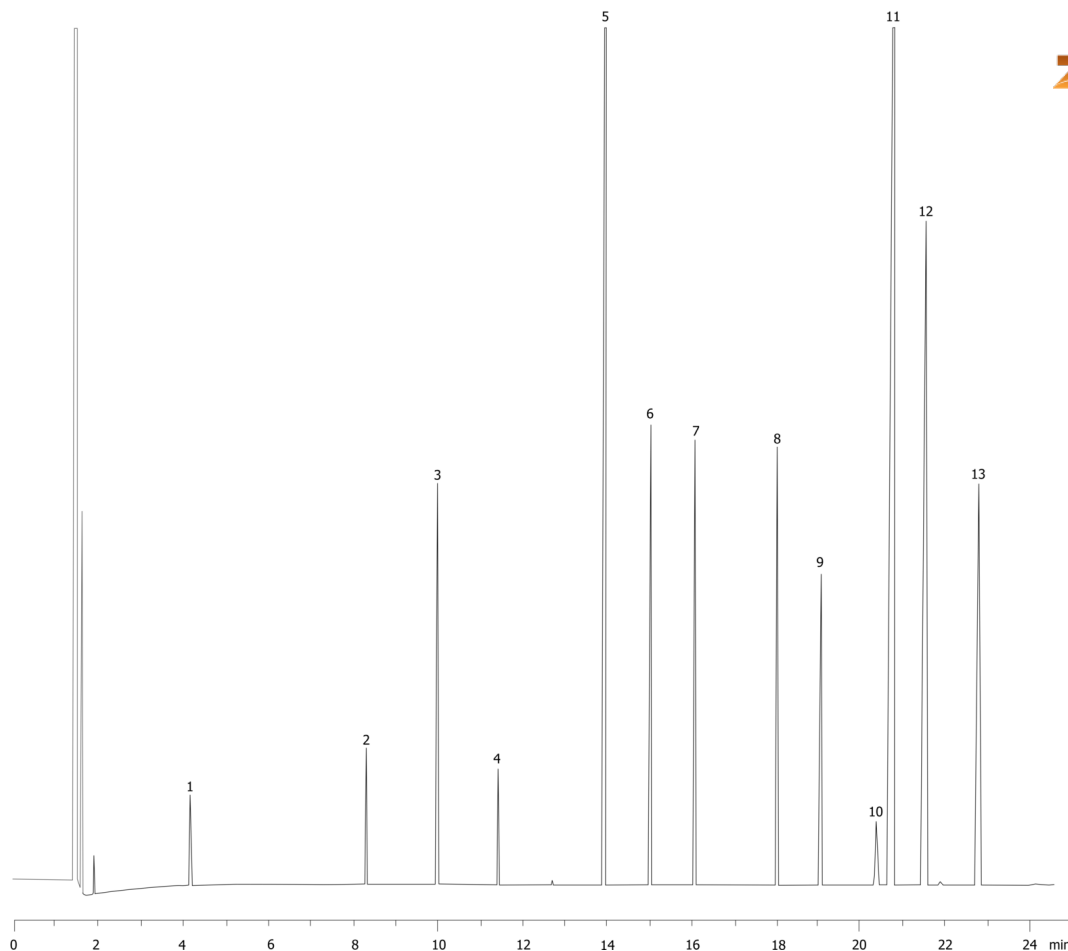
Injection: Split 50:1 1 μL @ 230°C

Detection: Flame Ionization (FID) (250°C)

1068



Products used in this application:



Saw Palmetto Berry (Fatty Acid Methyl Esters)

ANALYTES:

- 1 Caproic acid
- 2 Caprylic acid
- 3 Nonanoic acid
- 4 Capric acid
- 5 Lauric acid
- 6 Tridecanoic acid
- 7 Myristic acid
- 8 Palmitic acid
- 9 Heptadecanoic acid
- 10 Stearic acid
- 11 Oleic acid
- 12 Linoleic acid
- 13 Linolenic acid

