

# HPLC Application

ID No.: 1072

## Saw Palmeto Berry (*Serenoa repnes*)

**Column:** Luna® 3 µm C8(2) 100 Å, LC Column 150 x 4.6 mm, Ea

**Dimensions:** 150 x 4.6 mm ID

**Order No:** 00F-4248-E0

**Elution Type:** Isocratic

**Eluent A:** Acetonitrile

**Eluent B:** Water

| Gradient Profile: | Step No. | Time (min) | Pct A | Pct B |
|-------------------|----------|------------|-------|-------|
|                   | 1        | 0          | 87    | 13    |

**Flow Rate:** 1.5 mL/min

**Col. Temp.:** 25 °C

**Detection:** UV-Vis Abs.-Variable Wave.(UV) @ 254 nm (ambient)

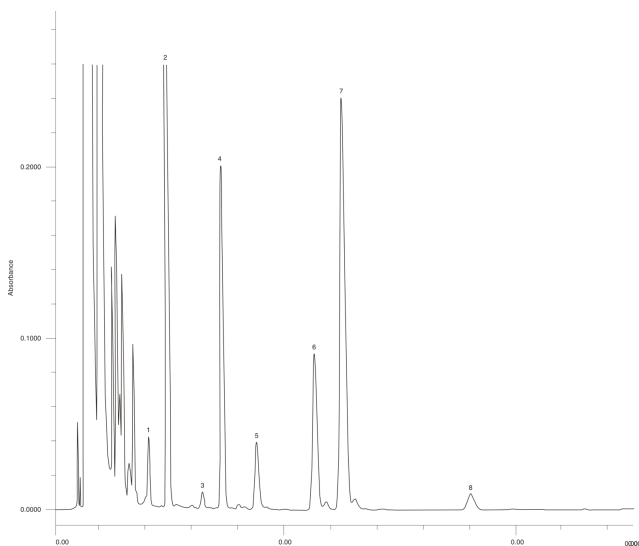
**Analyst Note:** SecurityGuard™ Guard Cartridge System extends column lifetime.

- SecurityGuard Cartridges, C8 4 x 3.0mm, 10/Pk Part No.: AJ0-4290

- Holder Part No.: KJ0-4282



Products used in this application:



### ANALYTES:

- 1 Capric acid
- 2 Lauric acid
- 3 Linolenic acid
- 4 Myristic acid
- 5 Linoleic acid
- 6 Palmitic acid
- 7 Oleic acid
- 8 Stearic acid

