

HPLC Application

ID No.: 10900

Basic Drugs at pH 10

Column: Synergi[™] 4 μ m Max-RP 80 Å, LC Column 150 x 4.6 mm, Ea

Dimensions: 150 x 4.6 mm ID

Order No: 00F-4337-E0

Elution Type: Isocratic

Eluent A: 20 mM Triethylamine pH 10.0

Eluent B: Methanol

Eluent C: Acetonitrile

| Gradient Profile: | Step No. | Time (min) | Pct A | Pct B | Pct C |
|-------------------|----------|------------|-------|-------|-------|
| | 1 | 0 | 30 | 35 | 35 |

Flow Rate: 1 mL/min

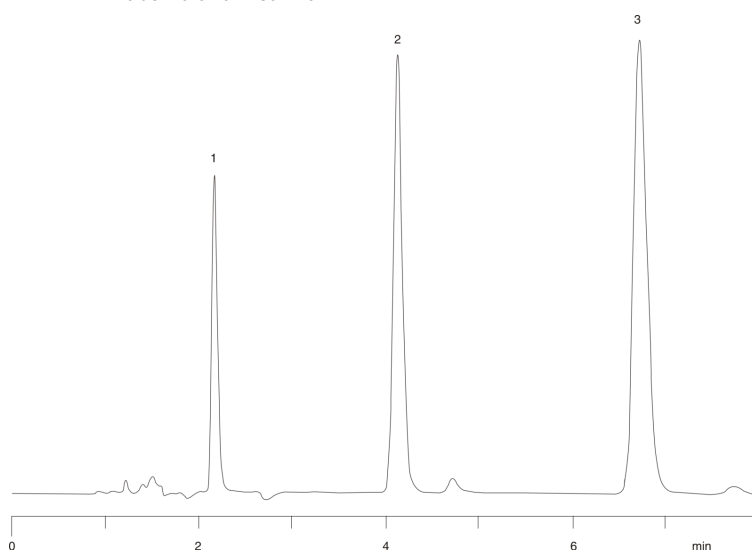
Col. Temp.: 25 °C

Detection: UV-Vis Abs.-Variable Wave.(UV) @ 254 nm (ambient)

Analyst Note: SecurityGuard[™] Guard Cartridge System extends column lifetime.

- SecurityGuard Cartridges, C12 4 x 3.0mm, 10/Pk Part No.: AJ0-6074

- Holder Part No.: KJ0-4282



ANALYTES:

- 1 Scopalamine
- 2 Doxylamine
- 3 Diphenhydramine

