

# HPLC Application

ID No.: 11078

## Naproxen - Figure 6a

**Column:** Luna® 3 µm C18(2) 100 Å, LC Column 50 x 4.6 mm, Ea

**Dimensions:** 50 x 4.6 mm ID

**Order No:** 00B-4251-E0

**Elution Type:** Gradient

**Eluent A:** Water w/0.1% TFA

**Eluent B:** Acetonitrile w/0.1% TFA

<b>Gradient Profile:</b>	<b>Step No.</b>	<b>Time (min)</b>	<b>Pct A</b>	<b>Pct B</b>
	<b>1</b>	0	85	15
	<b>2</b>	3	5	95

**Flow Rate:** 2 mL/min

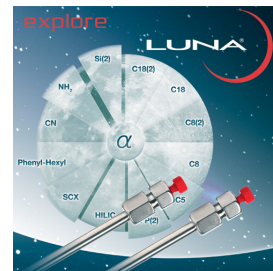
**Col. Temp.:** 25 °C

**Detection:** UV-Vis Abs.-Variable Wave.(UV) @ 254 nm (ambient)

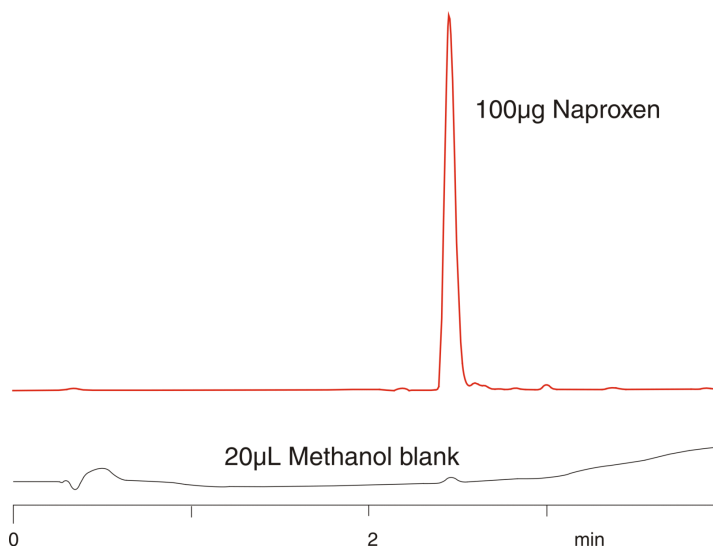
**Analyst Note:** SecurityGuard™ Guard Cartridge System extends column lifetime.

- SecurityGuard Cartridges, C18 4 x 3.0mm, 10/Pk Part No.: AJ0-4287

- Holder Part No.: KJ0-4282



Products used in this application:



### ANALYTES:

1 Naproxen

