

# HPLC Application

ID No.: 1115

## Echinacea (Echinacea purpurea)

**Column:** Luna® 5 µm C18(2) 100 Å, LC Column 250 x 4.6 mm, Ea

**Dimensions:** 250 x 4.6 mm ID

**Order No:** 00G-4252-E0

**Elution Type:** Gradient

**Eluent A:** Water/acetonitrile (90.5:9.5) + 1% Acetic acid

**Eluent B:** Acetonitrile

Gradient Profile:	Step No.	Time (min)	Pct A	Pct B
	1	0	100	0
	2	30	60	40
	3	40	100	0
	4	50	100	0

**Flow Rate:** 1 mL/min

**Col. Temp.:** 25 °C

**Detection:** UV-Vis Abs.-Variable Wave.(UV) @ 284 nm (ambient)

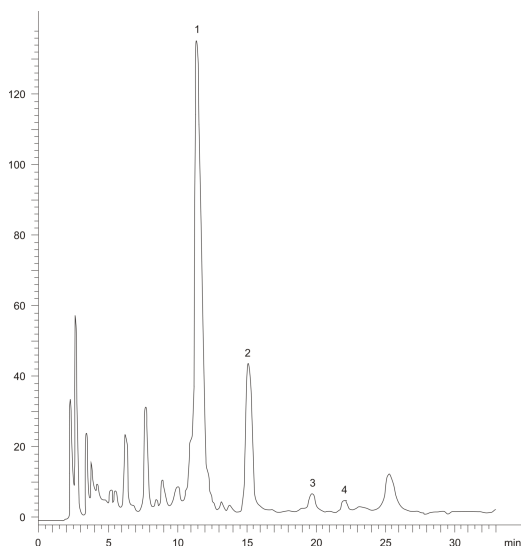
**Analyst Note:** SecurityGuard™ Guard Cartridge System extends column lifetime.

- SecurityGuard Cartridges, C18 4 x 3.0mm, 10/Pk Part No.: AJ0-4287

- Holder Part No.: KJ0-4282



Products used in this application:



### ANALYTES:

- 1 Caftaric acid
- 2 Chlorogenic acid
- 3 Caffeic acid
- 4 Syringic acid

