

Ginkgo Leaf (Ginkgo biloba)

Column: Zebtron[™] ZB-1, GC Cap. Column 30 m x 0.32 mm x 0.25 μm, Ea

Phase: 100% Dimethylpolysiloxane

Dimensions: 30 meters x 0.32 mm x 0.25 μm

Order No: 7HM-G001-11

Oven Profile: 120°C to 340°C @ 5°C/min

Carrier Gas: Constant Pressure Helium, 1.7 mL/min

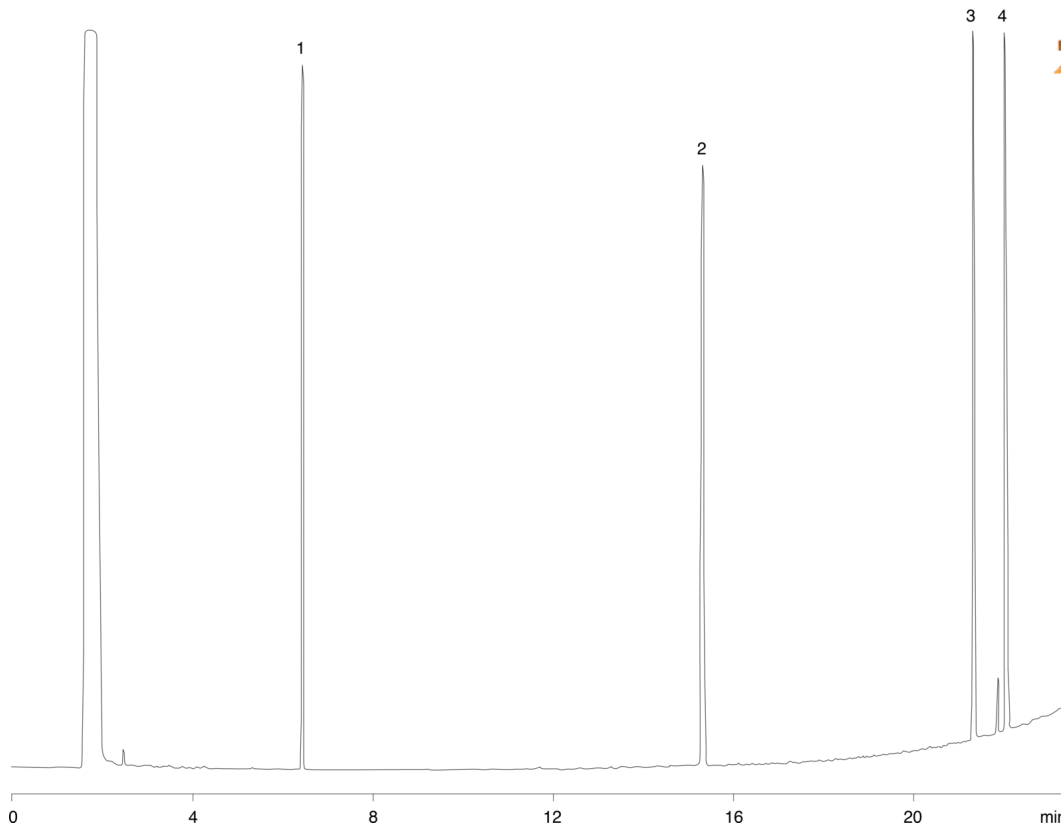
Injection: Splitless :1 1 μL @ 280°C

Detection: Flame Ionization (FID) (300°C)

1122



Products used in this application:



ANALYTES:

- 1 Benzophenone
- 2 Bilobalide
- 3 Ginkgolide A
- 4 Ginkgolide B

