

# HPLC Application

ID No.: 1166

## Albuterol

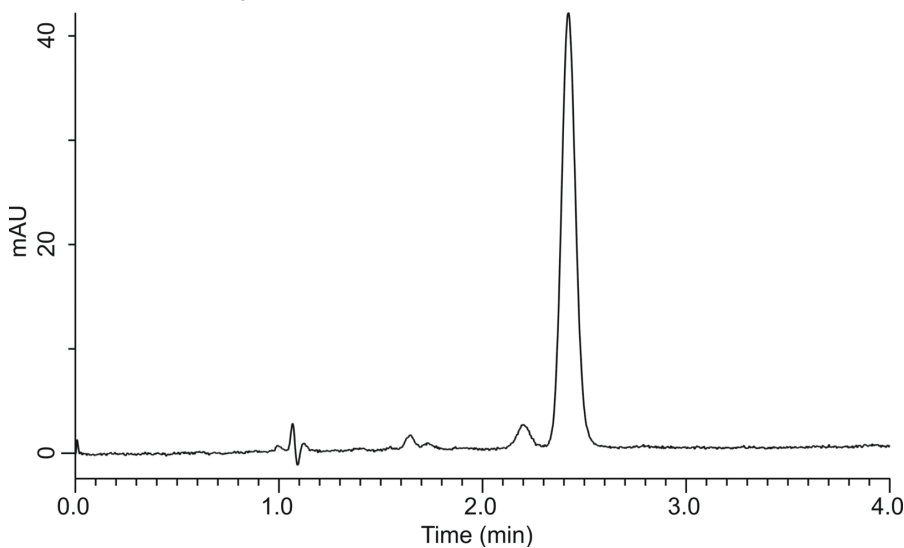
**Column:** Luna® 5 µm C18(2) 100 Å, LC Column 150 x 4.6 mm, Ea  
**Dimensions:** 150 x 4.6 mm ID  
**Order No:** 00F-4252-E0  
**Elution Type:** isocratic  
**Eluent A:** 1.13g Sodium 1-hexanesulfonate in 1200mL water + 12mL acetic acid  
**Eluent B:** Methanol  
**Gradient**

Step No.	Time (min)	Pct A	Pct B
1	0	60	40

**Profile:**  
**Flow Rate:** 1.5 mL/min  
**Col. Temp.:** ambient  
**Detection:** UV-Vis Abs.-Variable Wave.(UV) @ 276 nm (ambient)  
**Analyst Note:** Suitability: Efficiency >800plates/col  
Tailing factor < 2.5



Products used in this application:



### ANALYTES:

1 Albuterol

