

HPLC Application

ID No.: 12474

Cimetidine

Column: Synergi[™] 4 µm Max-RP 80 Å, LC Column 150 x 4.6 mm, Ea

Dimensions: 150 x 4.6 mm ID

Order No: 00F-4337-E0

Elution Type: Isocratic

Eluent A: 20mM Potassium phosphate pH 7

Eluent B: Methanol

| Gradient Profile: | Step No. | Time (min) | Pct A | Pct B |
|-------------------|----------|------------|-------|-------|
| | 1 | 0 | 60 | 40 |

Flow Rate: 1 mL/min

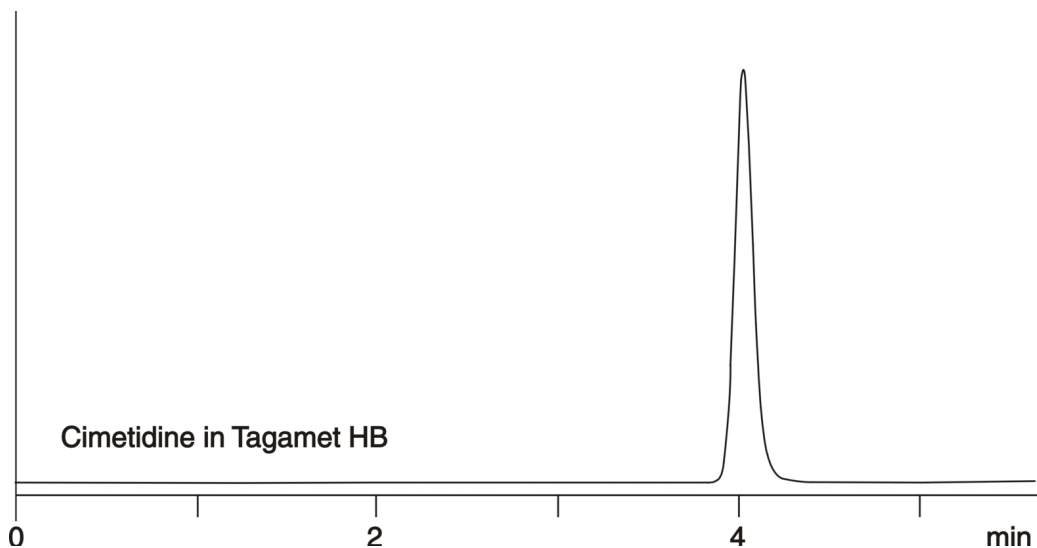
Col. Temp.: 30 °C

Detection: UV-Vis Abs.-Variable Wave.(UV) @ 220 nm (ambient)

Analyst Note: SecurityGuard[™] Guard Cartridge System extends column lifetime.

- SecurityGuard Cartridges, C12 4 x 3.0mm, 10/Pk Part No.: AJ0-6074

- Holder Part No.: KJ0-4282



ANALYTES:

1 Cimetidine

