

HPLC Application

ID No.: 12961

Panax Ginseng - HPLC

Column: Luna® 5 µm C18(2) 100 Å, LC Column 250 x 4.6 mm, Ea

Dimensions: 250 x 4.6 mm ID

Order No: 00G-4252-E0

Elution Type: Gradient

Eluent A: Water

Eluent B: Acetonitrile

Gradient Profile:	Step No.	Time (min)	Pct A	Pct B
	1	0	100	0
	2	30	40	60

Flow Rate: 1 mL/min

Col. Temp.: 50 °C

Detection: UV-Vis Abs.-Variable Wave.(UV) @ 203 nm (ambient)

Analyst Note: SecurityGuard™ Guard Cartridge System extends column lifetime.

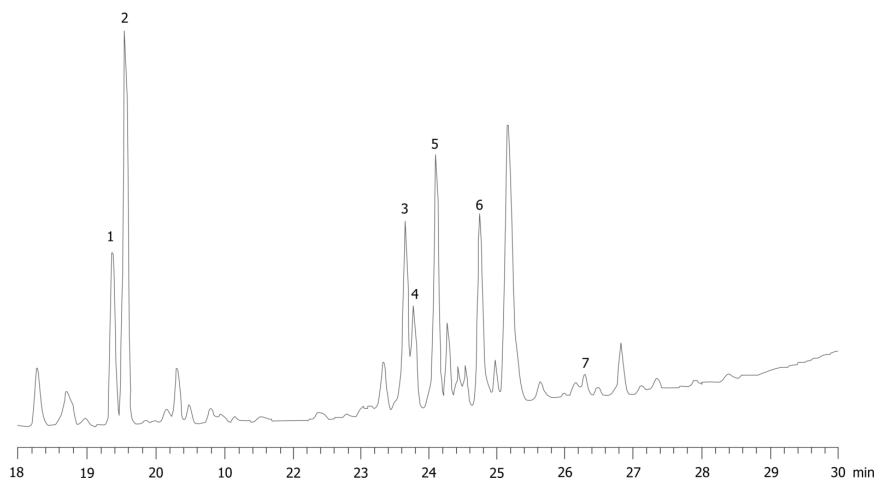
- SecurityGuard Cartridges, C18 4 x 3.0mm, 10/Pk Part No.: AJ0-4287

- Holder Part No.: KJ0-4282

12961



Products used in this application:



ANALYTES:

- 1 Re
- 2 Rg
- 3 Rb1
- 4 Rf
- 5 Rc
- 6 Rb2
- 7 Rd

