

## Aromatic Analysis

**Column:** Zebtron™ ZB-WAX, GC Cap. Column 30 m x 0.25 mm x 0.25 μm, Ea

**Phase:** Polyethylene Glycol (PEG)

**Dimensions:** 30 meters x 0.25 mm x 0.25 μm

**Order No:** 7HG-G007-11

**Oven Profile:** 40°C (4 min) to 140°C @ 6°C/min

**Carrier Gas:** Constant Flow Helium, 0.74 mL/min

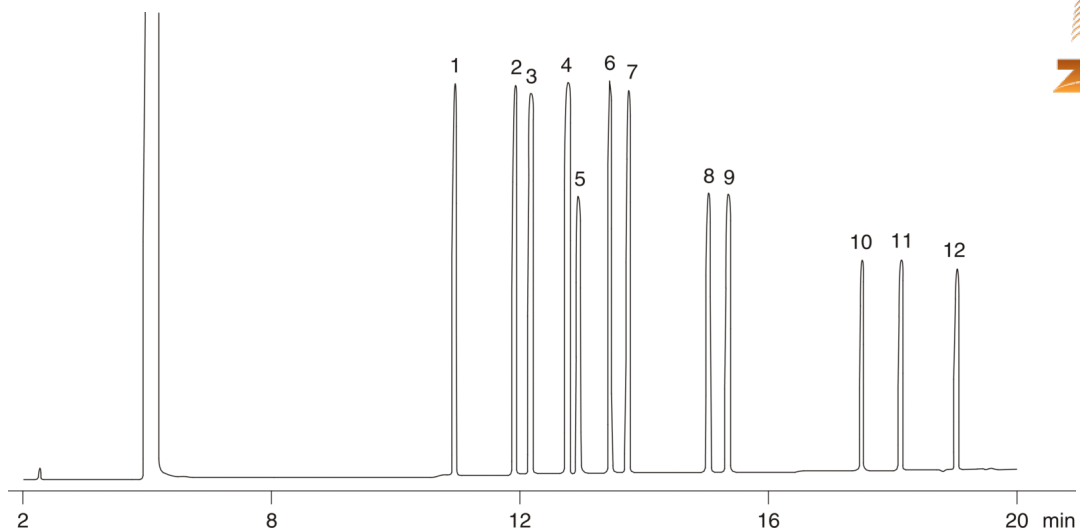
**Injection:** Split 150:1 1 μL @ 250°C

**Detection:** Flame Ionization (FID) (300°C)

**Analyst Note:** Sample analytes 200ppm VOCs in methanol



Products used in this application:



## Aromatic Analysis

### ANALYTES:

- 1 p-Xylene
- 2 Isopropylbenzene
- 3 o-Xylene
- 4 n-Propylbenzene
- 5 Chlorobenzene
- 6 tert-Butylbenzene
- 7 sec-Butylbenzene
- 8 2-Chlorotoluene
- 9 4-Chlorotoluene
- 10 1,3-Dichlorobenzene
- 11 1,4-Dichlorobenzene
- 12 1,2-Dichlorobenzene

