

GC Application

ID No.: 1331

Sweet Orange Oil

Column: Zebtron[™] ZB-1, GC Cap. Column 30 m x 0.25 mm x 0.25 µm, Ea

Phase: 100% Dimethylpolysiloxane

Dimensions: 30 meters x 0.25 mm x 0.25 µm

Order No: 7HG-G001-11

Oven Profile: 60°C (3 min) to 150°C @ 4°C/min, to 225°C @ 20°C/min

Carrier Gas: Constant Flow Helium, 1.06 mL/min

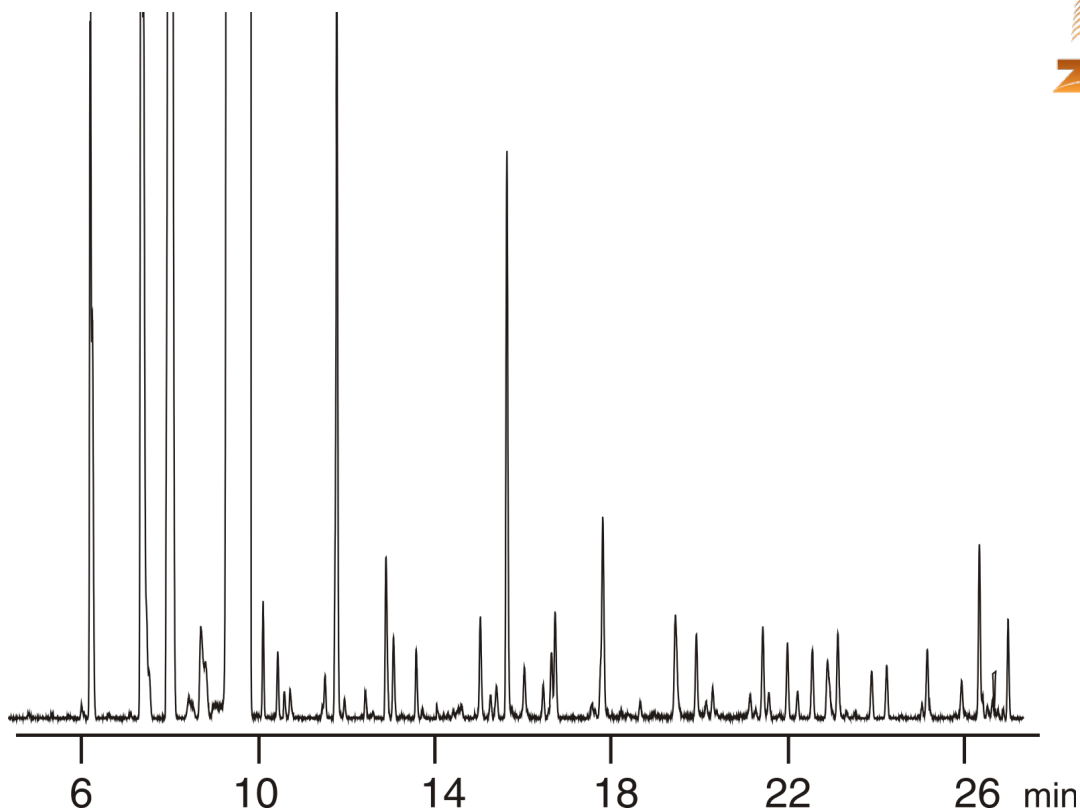
Injection: Split 100:1 0.4 µL @ 250°C

Detection: Mass Spectrometer (MS) (25°C)

Analyst Note: Direct injection



Products used in this application:



ANALYTES:

- 1 Sweet orange oil profile

