

# HPLC Application

ID No.: 13593

## Bepidil

**Column:** Chirex<sup>®</sup> (S)-VAL and (R)-NEA, LC Column 250 x 4.6 mm, Ea

**Dimensions:** 250 x 4.6 mm ID

**Order No:** 00G-3014-E0

**Elution Type:** Isocratic

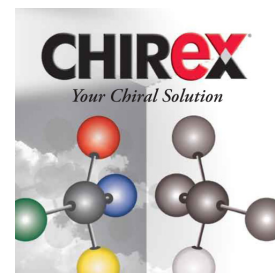
**Eluent A:** Hexane/Dichloroethane/Ethanol-TFA (62:35:3) w/ ethanol-TFA premixed (20:1)

Gradient	Step No.	Time (min)	Pct A
<b>Profile:</b>	<b>1</b>	0	100

**Flow Rate:** 1 mL/min

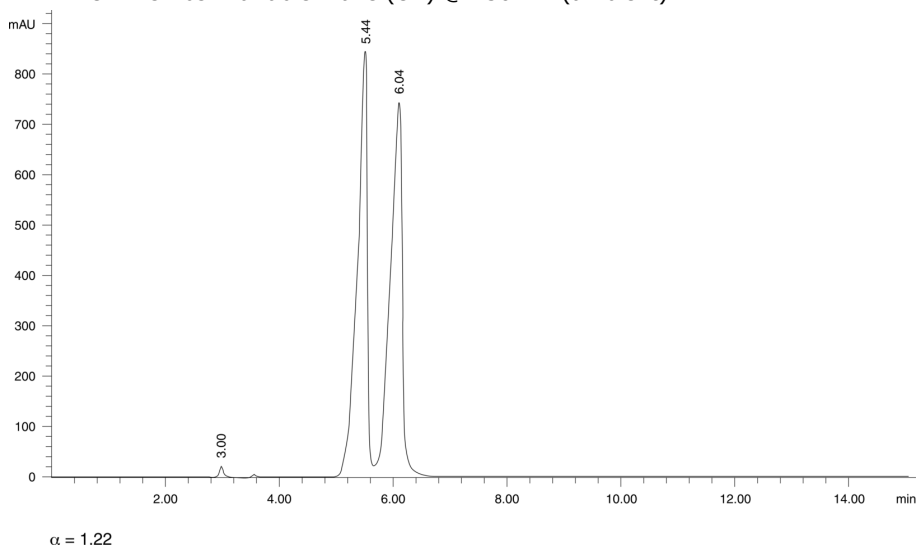
**Col. Temp.:** ambient

**Detection:** UV-Vis Abs.-Variable Wave.(UV) @ 250 nm (ambient)



Products used in this application:

**CHIREX**<sup>®</sup>



### ANALYTES:

**1** Bepidil

Retention Time: 5.44 min

**2** Bepidil

Retention Time: 6.04 min

