

HPLC Application

ID No.: 13623

Diperodon

Column: Chirex[®] (S)-VAL and (R)-NEA, LC Column 250 x 4.6 mm, Ea

Dimensions: 250 x 4.6 mm ID

Order No: 00G-3014-E0

Elution Type: Isocratic

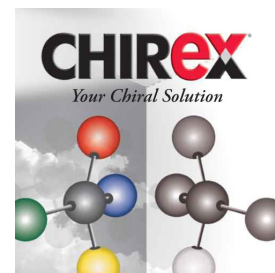
Eluent A: Hexane/Dichloroethane/Ethanol-TFA 60:35:5 ethanol-TFA 20:1

Gradient	Step No.	Time (min)	Pct A
Profile:	1	0	100

Flow Rate: 0.7 mL/min

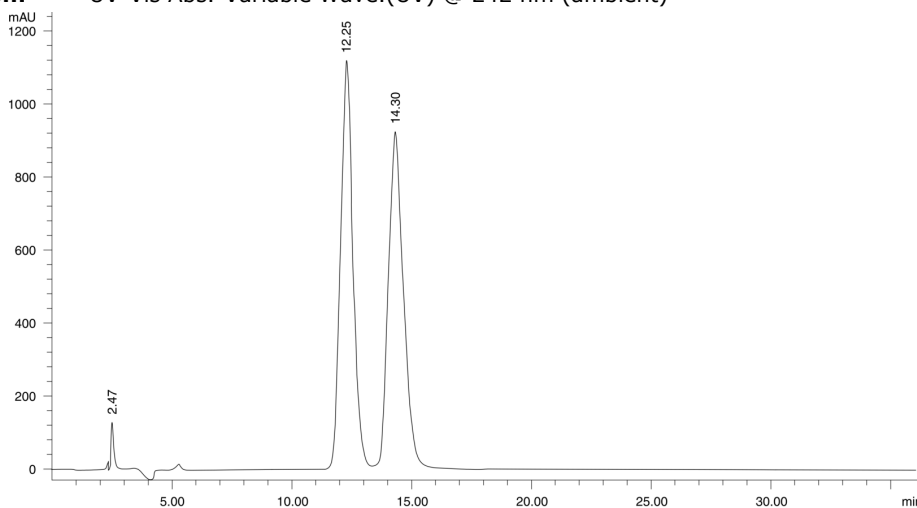
Col. Temp.: ambient

Detection: UV-Vis Abs.-Variable Wave.(UV) @ 242 nm (ambient)



Products used in this application:

CHIREX[®]



$\alpha = 1.20$

ANALYTES:

1 Diperodon

Retention Time: 12.25 min

2 Diperodon

Retention Time: 14.3 min

