

HPLC Application

ID No.: 13624

Diperodon

Column: Chirex® (S)-LEU and (R)-NEA, LC Column 250 x 4.6 mm, Ea

Dimensions: 250 x 4.6 mm ID

Order No: 00G-3020-E0

Elution Type: Isocratic

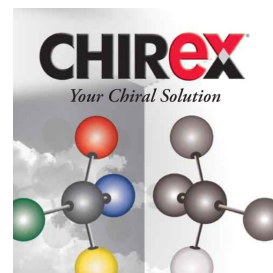
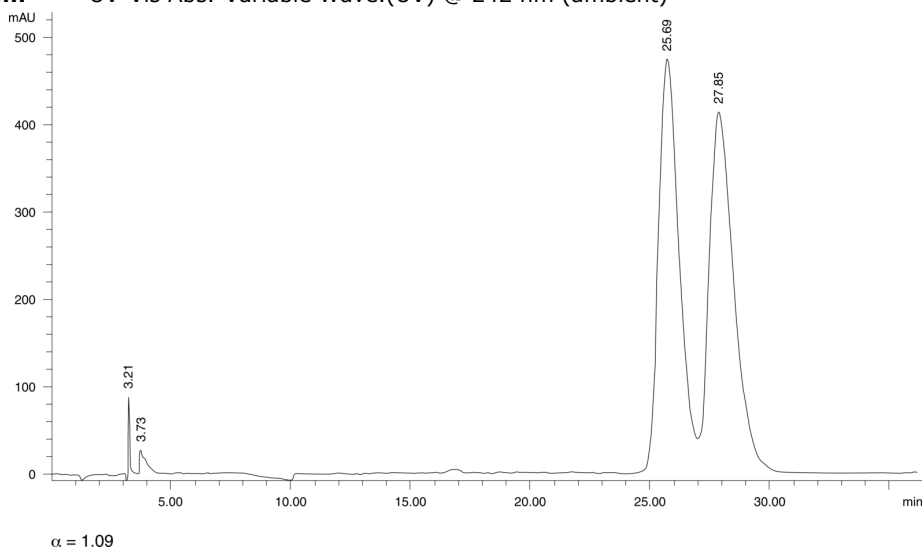
Eluent A: Hexane/Dichloroethane/Ethanol-TFA 77:20:3 ethanol-TFA 20:1

Gradient	Step No.	Time (min)	Pct A
Profile:	1	0	100

Flow Rate: 1 mL/min

Col. Temp.: ambient

Detection: UV-Vis Abs.-Variable Wave.(UV) @ 242 nm (ambient)



Products used in this application:

CHIREX®

ANALYTES:

1 Diperodon

Retention Time: 25.69 min

2 Diperodon

Retention Time: 27.85 min

