

HPLC Application

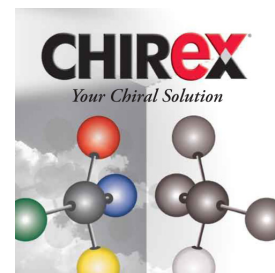
ID No.: 13636

Hydroxyphenyl-5-phenyl-hydantoin

Column: Chirex[®] (S)-LEU and (R)-NEA, LC Column 250 x 4.6 mm, Ea
Dimensions: 250 x 4.6 mm ID
Order No: 00G-3020-E0
Elution Type: Isocratic
Eluent A: Hexane/Dichloroethane/Ethanol-TFA (60:35:5) ethanol-TFA 20:1
Gradient

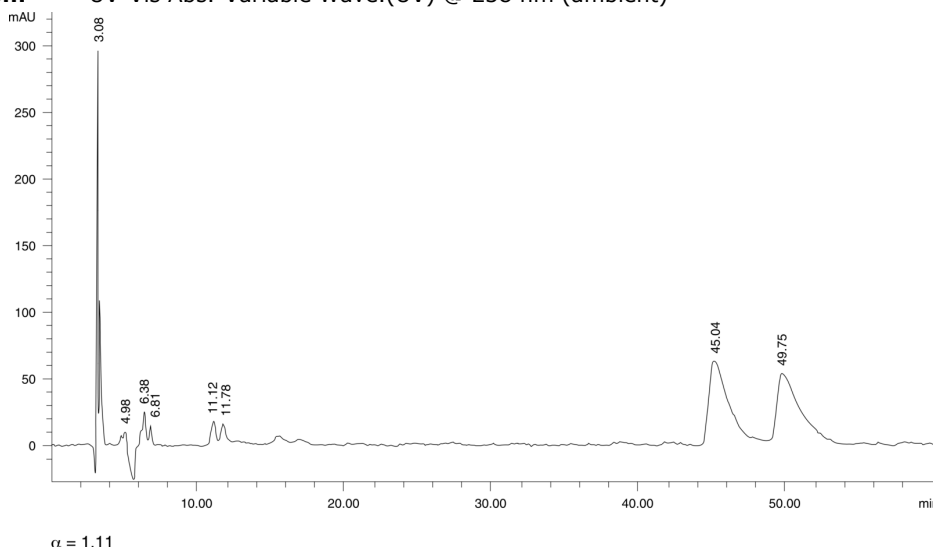
Step No.	Time (min)	Pct A
1	0	100

Profile:
Flow Rate: 1 mL/min
Col. Temp.: ambient
Detection: UV-Vis Abs.-Variable Wave.(UV) @ 238 nm (ambient)



Products used in this application:

CHIREX[®]



ANALYTES:

- 1 Hydroxyphenyl-5-phenyl-hydantoin
Retention Time: 45.04 min
- 2 Hydroxyphenyl-5-phenyl-hydantoin
Retention Time: 49.75 min

