

HPLC Application

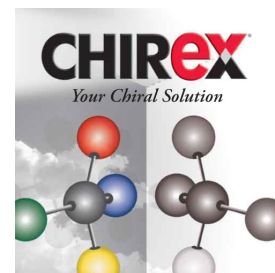
ID No.: 13652

Metaproterenol

Column: Chirex® (S)-LEU and (R)-NEA, LC Column 250 x 4.6 mm, Ea
Dimensions: 250 x 4.6 mm ID
Order No: 00G-3020-E0
Elution Type: Isocratic
Eluent A: Hexane/Dichloroethane/Ethanol-TFA (55:35:10) ethanol-TFA 20:1
Gradient

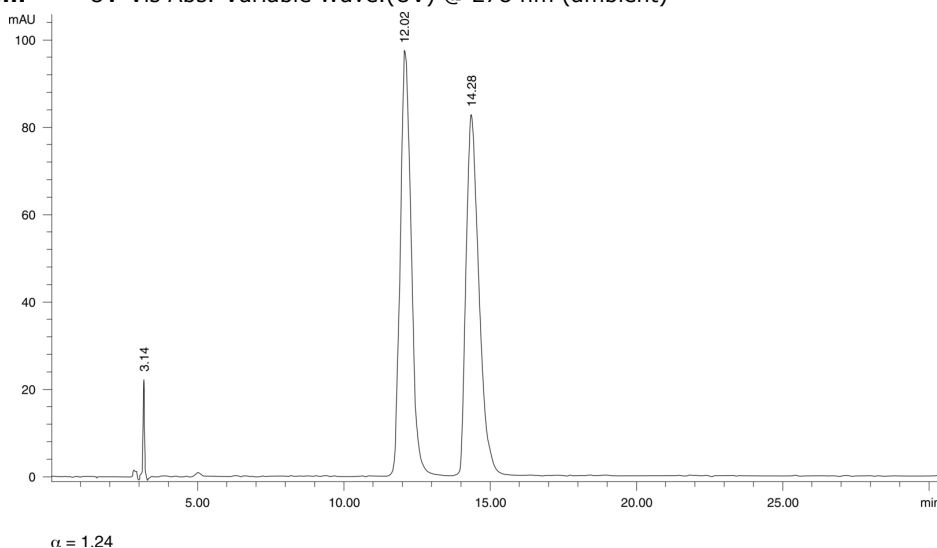
Step No.	Time (min)	Pct A
1	0	100

Profile:
Flow Rate: 1 mL/min
Col. Temp.: ambient
Detection: UV-Vis Abs.-Variable Wave.(UV) @ 278 nm (ambient)



Products used in this application:

CHIREX®



ANALYTES:

- 1 Metaproterenol
Retention Time: 3.14 min
- 2 Metaproterenol
Retention Time: 12.02 min
- 3 Metaproterenol
Retention Time: 14.28 min

