

# HPLC Application

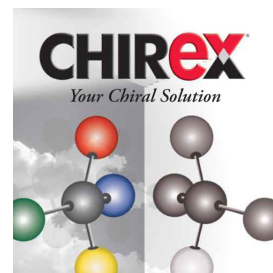
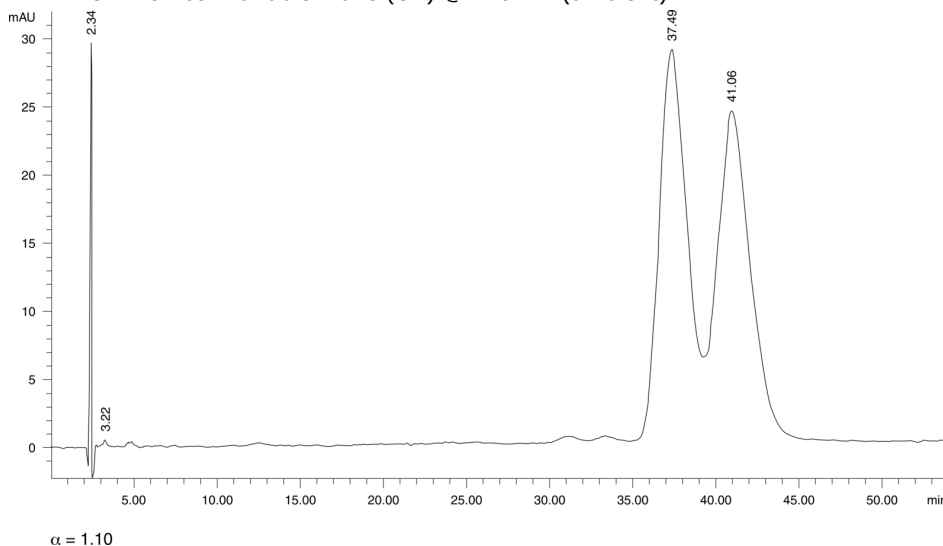
ID No.: 13654

## Metaproterenol

**Column:** Chirex<sup>®</sup> (S)-VAL and (R)-NEA, LC Column 250 x 4.6 mm, Ea  
**Dimensions:** 250 x 4.6 mm ID  
**Order No:** 00G-3014-E0  
**Elution Type:** Isocratic  
**Eluent A:** Hexane/Dichloroethane/Ethanol-TFA (43:50:7) ethanol-TFA 20:1  
**Gradient**

Step No.	Time (min)	Pct A
1	0	100

**Profile:**  
**Flow Rate:** 0.7 mL/min  
**Col. Temp.:** ambient  
**Detection:** UV-Vis Abs.-Variable Wave.(UV) @ 278 nm (ambient)



Products used in this application:

**CHIREX**<sup>®</sup>

### ANALYTES:

- 1 Metaproterenol  
Retention Time: 2.34 min
- 2 Metaproterenol  
Retention Time: 37.49 min
- 3 Metaproterenol  
Retention Time: 41.06 min

