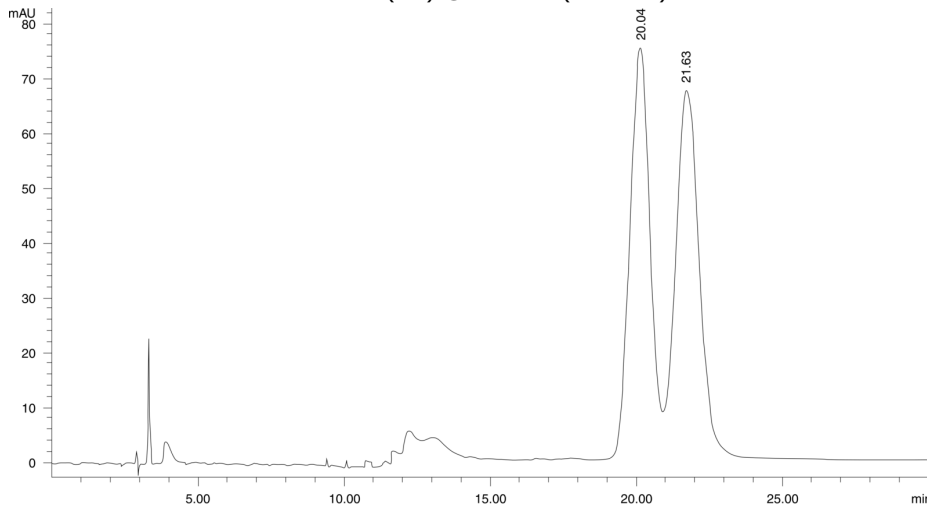


## Midodrine

**Column:** N/A  
**Dimensions:** N/A  
**Order No:** N/A  
**Elution Type:** N/A  
**Eluent A:** Hexane/Dichloroethane/Ethanol-TFA (55:35:10) w/ethanol-TFA (20:1)  
**Gradient**

Step No.	Time (min)	Pct A
1	0	100

**Profile:**  
**Flow Rate:** 1 mL/min  
**Col. Temp.:** ambient  
**Detection:** UV-Vis Abs.-Variable Wave.(UV) @ 292 nm (ambient)



$\alpha = 1.09$

### ANALYTES:

- 1 Midodrine  
Retention Time: 20.04 min
- 2 Midodrine  
Retention Time: 21.63 min

