

HPLC Application

ID No.: 13666

Midodrine

Column: Chirex[®] (S)-VAL and (R)-NEA, LC Column 250 x 4.6 mm, Ea

Dimensions: 250 x 4.6 mm ID

Order No: 00G-3014-E0

Elution Type: Isocratic

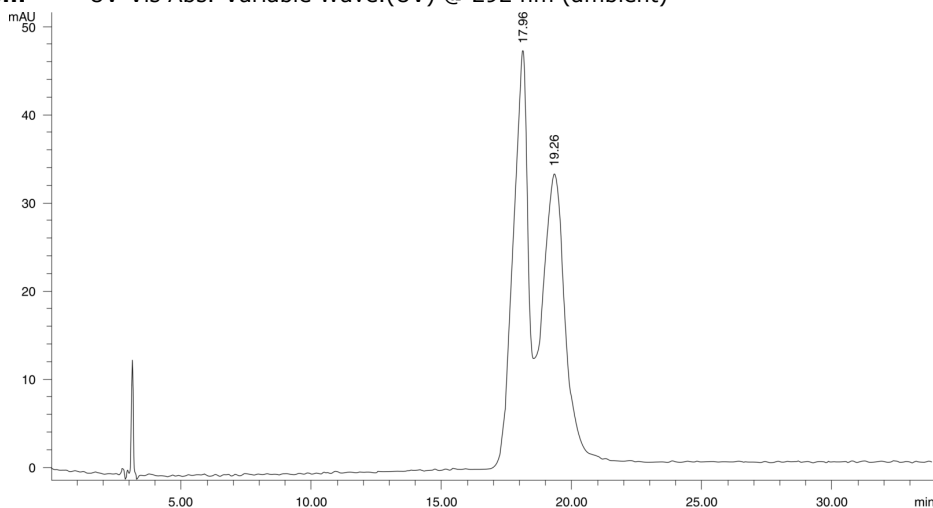
Eluent A: Hexane/Dichloroethane/Ethanol-TFA (57.5:35:7.5)

Gradient	Step No.	Time (min)	Pct A
Profile:	1	0	100

Flow Rate: 1 mL/min

Col. Temp.: ambient

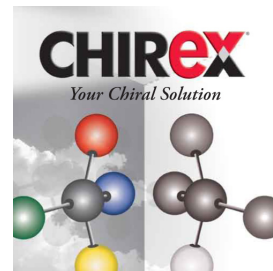
Detection: UV-Vis Abs.-Variable Wave.(UV) @ 292 nm (ambient)



$\alpha = 1.09$

ANALYTES:

- 1** Midodrine
Retention Time: 17.96 min
- 2** Midodrine
Retention Time: 19.26 min



Products used in this application:

CHIREX[®]

