

## Proglumide

**Column:** N/A

**Dimensions:** N/A

**Order No:** N/A

**Elution Type:** N/A

**Eluent A:** Hexane/Dichloroethane/Ethanol-TFA (55:35:10) w/ethanol-TFA (20:1)

**Gradient**

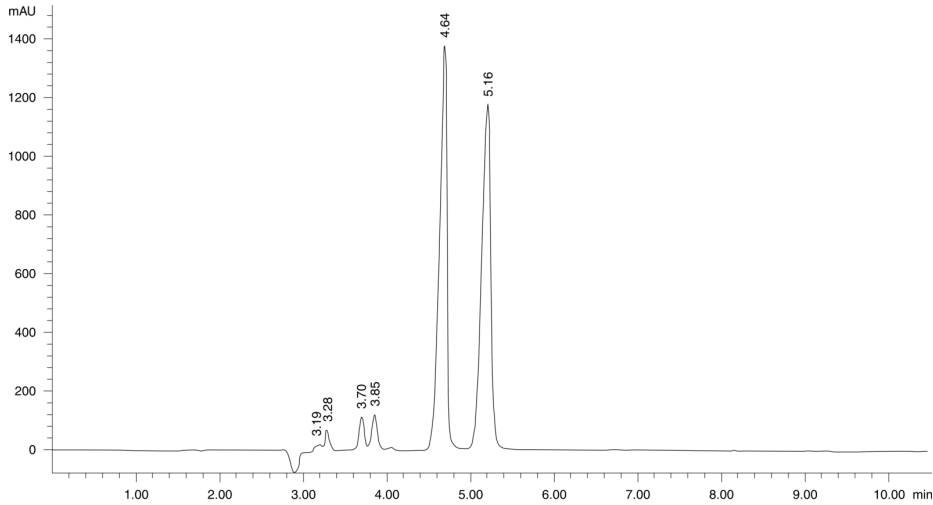
Step No.	Time (min)	Pct A
1	0	100

**Profile:**

**Flow Rate:** 1 mL/min

**Col. Temp.:** ambient

**Detection:** UV-Vis Abs.-Variable Wave.(UV) @ 242 nm (ambient)



$\alpha = 1.27$

### ANALYTES:

**1** Proglumide

Retention Time: 4.64 min

**2** Proglumide

Retention Time: 5.16 min

