

HPLC Application

ID No.: 13687

Proglumide

Column: Chirex[®] (S)-VAL and (R)-NEA, LC Column 250 x 4.6 mm, Ea
Dimensions: 250 x 4.6 mm ID
Order No: 00G-3014-E0
Elution Type: Isocratic
Eluent A: Hexane/Dichloroethane/Ethanol-TFA (62:35:3) w/ ethanol-TFA premixed (20:1)
Gradient

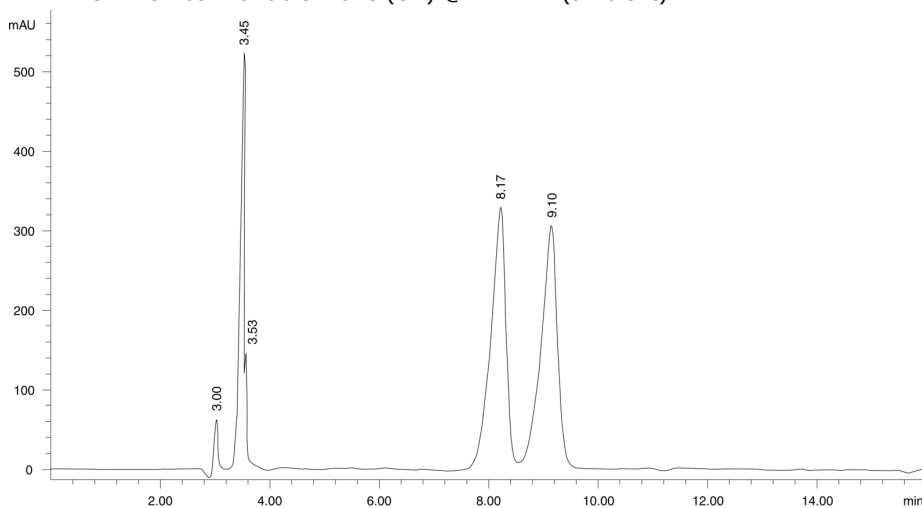
Step No.	Time (min)	Pct A
1	0	100

Profile:
Flow Rate: 1 mL/min
Col. Temp.: ambient
Detection: UV-Vis Abs.-Variable Wave.(UV) @ 242 nm (ambient)



Products used in this application:

CHIREX[®]



$\alpha = 1.17$

ANALYTES:

- 1 Proglumide
Retention Time: 8.17 min
- 2 Proglumide
Retention Time: 9.1 min

