

# HPLC Application

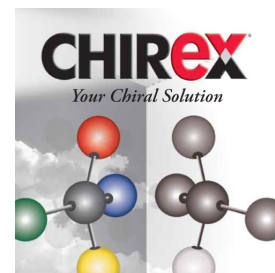
ID No.: 13689

## Promethazine

**Column:** Chirex® (S)-VAL and (R)-NEA, LC Column 250 x 4.6 mm, Ea  
**Dimensions:** 250 x 4.6 mm ID  
**Order No:** 00G-3014-E0  
**Elution Type:** Isocratic  
**Eluent A:** Hexane/Dichloroethane/Ethanol-TFA (75:20:5) ethanol-TFA 20:1  
**Gradient**

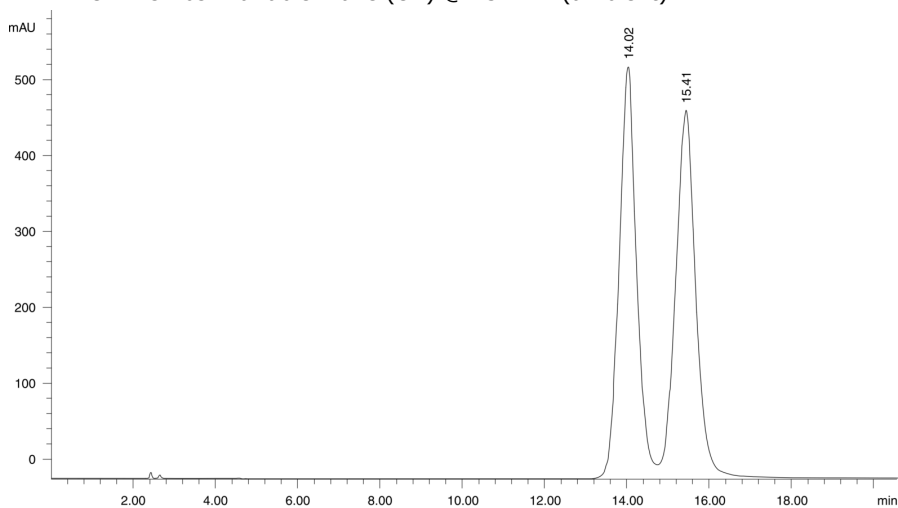
Step No.	Time (min)	Pct A
1	0	100

**Profile:**  
**Flow Rate:** 0.7 mL/min  
**Col. Temp.:** ambient  
**Detection:** UV-Vis Abs.-Variable Wave.(UV) @ 254 nm (ambient)



Products used in this application:

**CHIREX**®



$\alpha = 1.12$

### ANALYTES:

- 1 Promethazine  
Retention Time: 14.02 min
- 2 Promethazine  
Retention Time: 15.41 min

