

# HPLC Application

ID No.: 13721

## N-Formylvaline

**Column:** Chirex® 3126 (D)-penicillamine, LC Column 150 x 4.6 mm, Ea

**Dimensions:** 150 x 4.6 mm ID

**Order No:** 00F-3126-E0

**Elution Type:** Isocratic

**Eluent A:** 1 mM Copper(II) sulfate in water

**Eluent B:** Acetonitrile

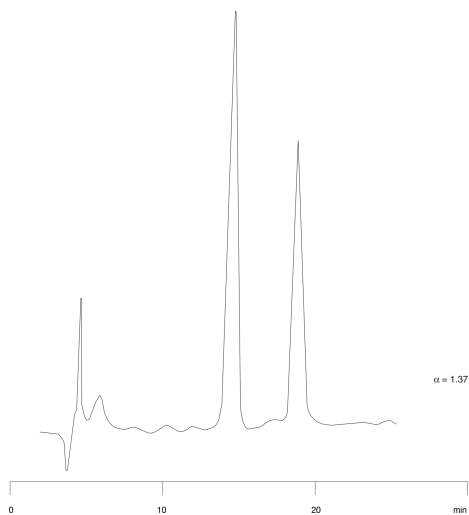
Gradient Profile:	Step No.	Time (min)	Pct A	Pct B
	1	0	85	15

**Flow Rate:** 1 mL/min

**Col. Temp.:** ambient

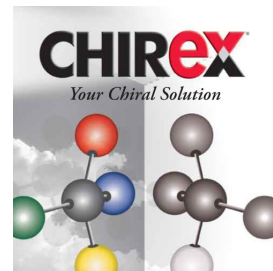
**Detection:** UV-Vis Abs.-Variable Wave.(UV) @ 254 nm (ambient)

13721



### ANALYTES:

- 1 N-Formylvaline  
Retention Time: 13.01 min
- 2 N-Formylvaline  
Retention Time: 17.33 min



Products used in this application:

**CHIREX**®

