

# HPLC Application

ID No.: 13789

## Naphthylglycine

**Column:** Chirex<sup>®</sup> 3126 (D)-penicillamine, LC Column 150 x 4.6 mm, Ea

**Dimensions:** 150 x 4.6 mm ID

**Order No:** 00F-3126-E0

**Elution Type:** Isocratic

**Eluent A:** 2 mM Copper (II) sulfate in water

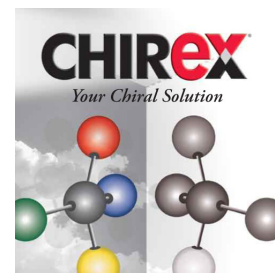
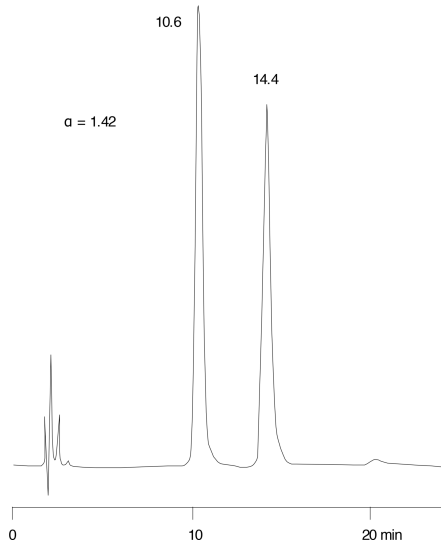
**Eluent B:** Isopropanol

Gradient Profile:	Step No.	Time (min)	Pct A	Pct B
	1	0	85	15

**Flow Rate:** 1 mL/min

**Col. Temp.:** ambient

**Detection:** UV-Vis Abs.-Variable Wave.(UV) @ 254 nm (ambient)



Products used in this application:

**CHIREX**<sup>®</sup>

### ANALYTES:

- 1** Naphthylglycine  
Retention Time: 10.57 min
- 2** Naphthylglycine  
Retention Time: 14.4 min

