

HPLC Application

ID No.: 13790

p-Boronophenylalanine

Column: Chirex[®] 3126 (D)-penicillamine, LC Column 150 x 4.6 mm, Ea

Dimensions: 150 x 4.6 mm ID

Order No: 00F-3126-E0

Elution Type: Isocratic

Eluent A: 2 mM Copper (II) sulfate in water

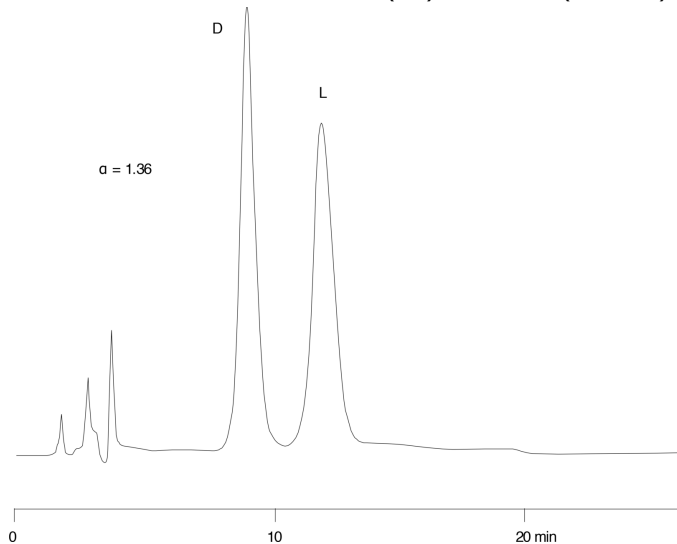
Eluent B: Isopropanol

| Gradient Profile: | Step No. | Time (min) | Pct A | Pct B |
|-------------------|----------|------------|-------|-------|
| | 1 | 0 | 90 | 10 |

Flow Rate: 1 mL/min

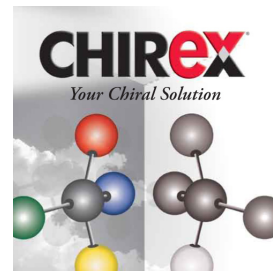
Col. Temp.: ambient

Detection: UV-Vis Abs.-Variable Wave.(UV) @ 254 nm (ambient)



ANALYTES:

- 1 D-p-Boronophenylalanine
- 2 L-p-Boronophenylalanine



Products used in this application:

CHIREX[®]

