

# HPLC Application

ID No.: 13795

## O-(3,5-Dinitrophenyl)aminocarbonyl mandelic acid

**Column:** Chirex<sup>®</sup> (S)-LEU and DNAn, LC Column 250 x 4.6 mm, Ea

**Dimensions:** 250 x 4.6 mm ID

**Order No:** 00G-3011-E0

**Elution Type:** Isocratic

**Eluent A:** 0.03 M Ammonium acetate in methanol

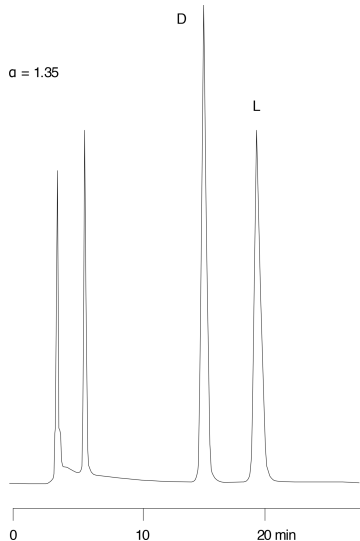
Gradient	Step No.	Time (min)	Pct A
----------	----------	------------	-------

<b>Profile:</b>	<b>1</b>	0	100
-----------------	----------	---	-----

**Flow Rate:** 1 mL/min

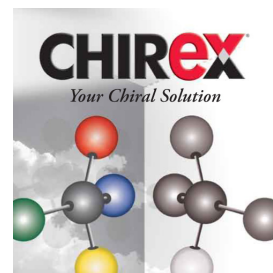
**Col. Temp.:** ambient

**Detection:** UV-Vis Abs.-Variable Wave.(UV) @ 254 nm (ambient)



### ANALYTES:

- 1 D-O-(3,5-Dinitrophenyl)aminocarbonyl mandelic acid
- 2 L-O-(3,5-Dinitrophenyl)aminocarbonyl mandelic acid



Products used in this application:

**CHIREX**<sup>®</sup>

