

# HPLC Application

ID No.: 13800

## N-FMOC-leucine

**Column:** Chirex<sup>®</sup> (S)-LEU and DNAn, LC Column 250 x 4.6 mm, Ea

**Dimensions:** 250 x 4.6 mm ID

**Order No:** 00G-3011-E0

**Elution Type:** Isocratic

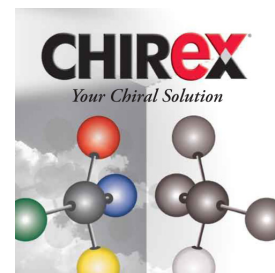
**Eluent A:** 0.01 M Ammonium acetate in methanol

Gradient	Step No.	Time (min)	Pct A
<b>Profile:</b>	<b>1</b>	0	100

**Flow Rate:** 1 mL/min

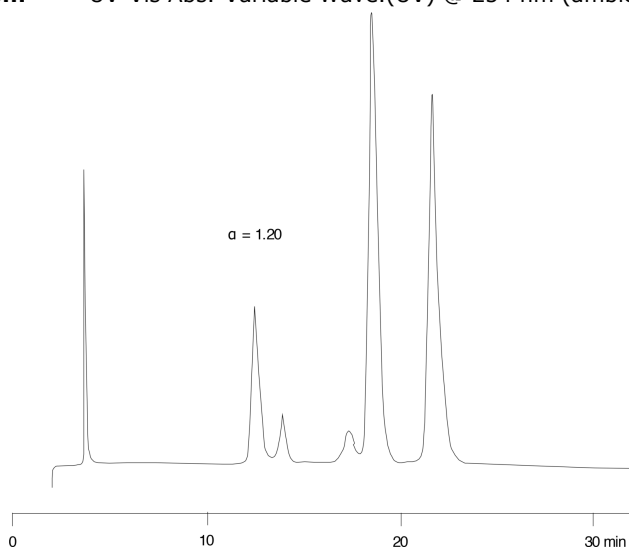
**Col. Temp.:** ambient

**Detection:** UV-Vis Abs.-Variable Wave.(UV) @ 254 nm (ambient)



Products used in this application:

**CHIREX**<sup>®</sup>



### ANALYTES:

- 1 N-FMOC-leucine
- 2 N-FMOC-leucine

