

# HPLC Application

ID No.: 13857

## Octopamine

**Column:** Chirex® 3126 (D)-penicillamine, LC Column 150 x 4.6 mm, Ea

**Dimensions:** 150 x 4.6 mm ID

**Order No:** 00F-3126-E0

**Elution Type:** Isocratic

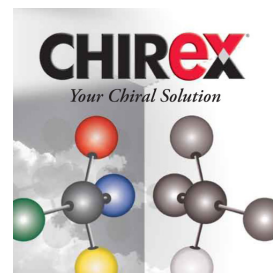
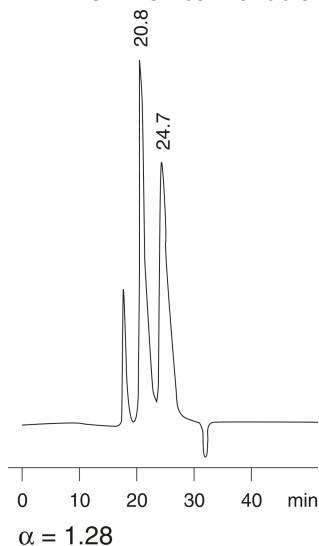
**Eluent A:** 5 mM Copper (II) acetate in water [pH 6.0]

Gradient	Step No.	Time (min)	Pct A
Profile:	1	0	100

**Flow Rate:** 0.2 mL/min

**Col. Temp.:** ambient

**Detection:** UV-Vis Abs.-Variable Wave.(UV) @ 280 nm (ambient)



Products used in this application:

**CHIREX**®

### ANALYTES:

- 1 Octopamine  
Retention Time: 20.84 min
- 2 Octopamine  
Retention Time: 24.68 min