

# HPLC Application

ID No.: 13858

## Norphenylephrine

**Column:** Chirex<sup>®</sup> 3126 (D)-penicillamine, LC Column 150 x 4.6 mm, Ea

**Dimensions:** 150 x 4.6 mm ID

**Order No:** 00F-3126-E0

**Elution Type:** Isocratic

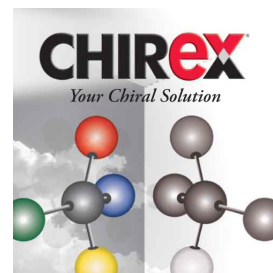
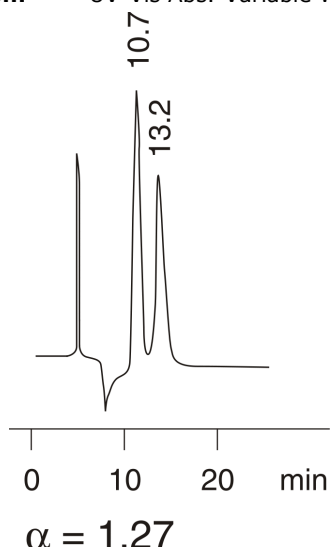
**Eluent A:** 5 mM Copper (II) acetate in water [pH 6.0]

Gradient	Step No.	Time (min)	Pct A
<b>Profile:</b>	<b>1</b>	0	100

**Flow Rate:** 1 mL/min

**Col. Temp.:** ambient

**Detection:** UV-Vis Abs.-Variable Wave.(UV) @ 254 nm (ambient)



Products used in this application:

**CHIREX**<sup>®</sup>

### ANALYTES:

- 1** Norphenylephrine  
Retention Time: 10.65 min
- 2** Norphenylephrine  
Retention Time: 13.18 min

