

# HPLC Application

ID No.: 13861

## Normetanephine

**Column:** Chirex<sup>®</sup> 3126 (D)-penicillamine, LC Column 150 x 4.6 mm, Ea

**Dimensions:** 150 x 4.6 mm ID

**Order No:** 00F-3126-E0

**Elution Type:** Isocratic

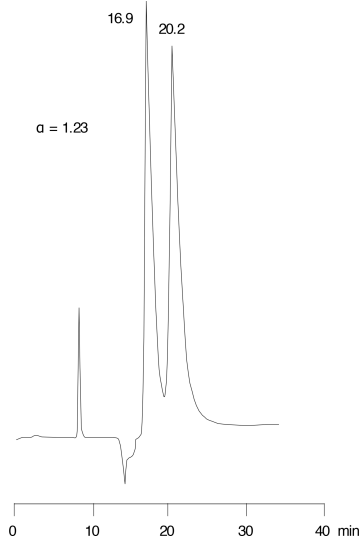
**Eluent A:** 1 mM Copper (II) sulfate in water

Gradient	Step No.	Time (min)	Pct A
Profile:	1	0	100

**Flow Rate:** 1 mL/min

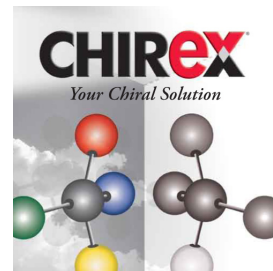
**Col. Temp.:** ambient

**Detection:** UV-Vis Abs.-Variable Wave.(UV) @ 280 nm (ambient)



### ANALYTES:

1 Normetanephine



Products used in this application:

**CHIREX**<sup>®</sup>

