

HPLC Application

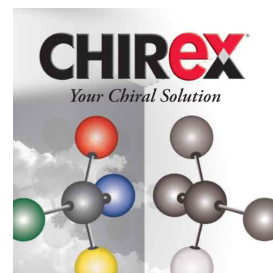
ID No.: 13871

Synephrine

Column: Chirex® 3126 (D)-penicillamine, LC Column 250 x 4.6 mm, Ea
Dimensions: 250 x 4.6 mm ID
Order No: 00G-3126-E0
Elution Type: Isocratic
Eluent A: 1 mM Copper (II) acetate and 20 mM ammonium acetate in water [pH 6.5]
Gradient

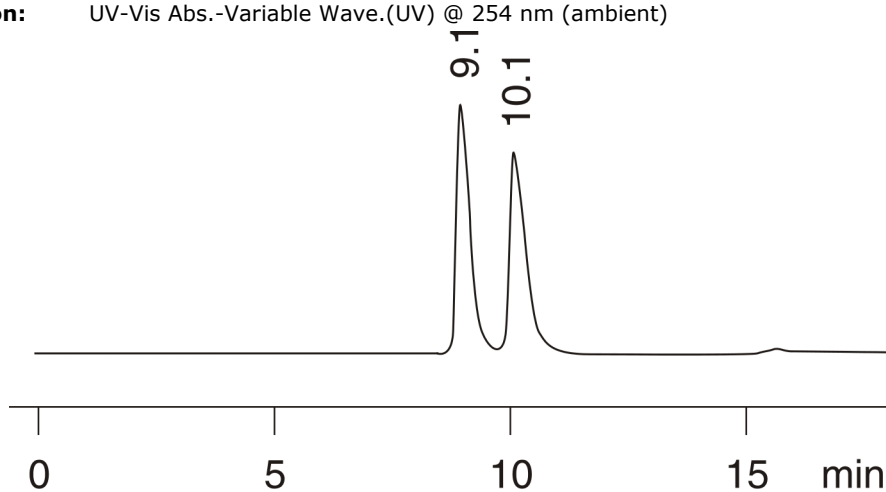
Step No.	Time (min)	Pct A
1	0	100

Profile:
Flow Rate: 0.8 mL/min
Col. Temp.: ambient
Detection: UV-Vis Abs.-Variable Wave.(UV) @ 254 nm (ambient)



Products used in this application:

CHIREX®



$$\alpha = 1.19$$

ANALYTES:

- 1 Synephrine
Retention Time: 3.145 min
- 2 Synephrine
Retention Time: 10.301 min