

# HPLC Application

ID No.: 13959

## O-Pyrene-1-carbonyl leucic acid

**Column:** Chirex<sup>®</sup> (S)-LEU and DNAn, LC Column 250 x 4.6 mm, Ea

**Dimensions:** 250 x 4.6 mm ID

**Order No:** 00G-3011-E0

**Elution Type:** Isocratic

**Eluent A:** 0.1 M Ammonium acetate in methanol

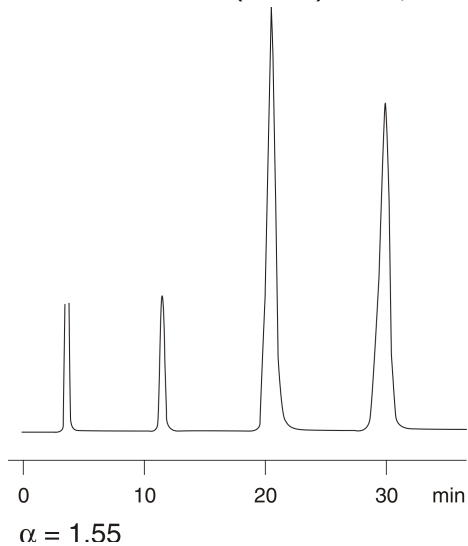
**Eluent B:** Dioxane

Gradient Profile:	Step No.	Time (min)	Pct A	Pct B
	1	0	50	50

**Flow Rate:** 1 mL/min

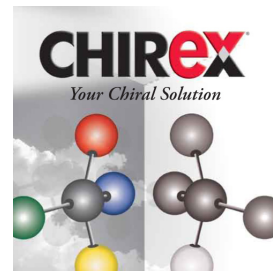
**Col. Temp.:** ambient

**Detection:** Fluorescence (FLUOR) @ 350/410 nm (ambient)



### ANALYTES:

- 1 O-Pyrene-1-carbonyl leucic acid
- 2 O-Pyrene-1-carbonyl leucic acid



Products used in this application:

**CHIREX**<sup>®</sup>

