

HPLC Application

ID No.: 14006

Valine

Column: Chirex[®] 3126 (D)-penicillamine, LC Column 150 x 4.6 mm, Ea

Dimensions: 150 x 4.6 mm ID

Order No: 00F-3126-E0

Elution Type: Isocratic

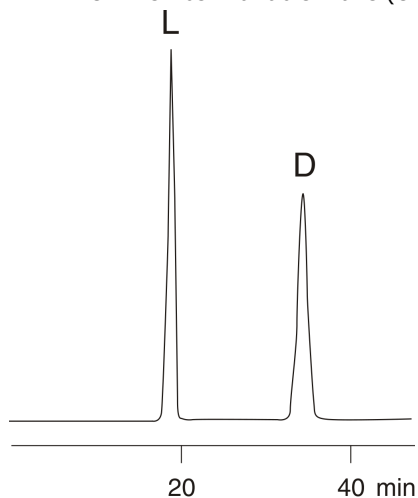
Eluent A: 1 mM Copper (II) sulfate in water

| Gradient | Step No. | Time (min) | Pct A |
|----------|----------|------------|-------|
| Profile: | 1 | 0 | 100 |

Flow Rate: 1 mL/min

Col. Temp.: ambient

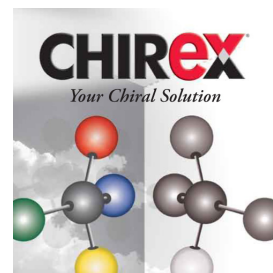
Detection: UV-Vis Abs.-Variable Wave.(UV) @ 254 nm (ambient)



$$\alpha = 1.91$$

ANALYTES:

- 1 L-Valine
- 2 D-Valine



Products used in this application:

CHIREX[®]

