

# HPLC Application

ID No.: 14016

## Serine

**Column:** Chirex<sup>®</sup> 3126 (D)-penicillamine, LC Column 150 x 4.6 mm, Ea

**Dimensions:** 150 x 4.6 mm ID

**Order No:** 00F-3126-E0

**Elution Type:** Isocratic

**Eluent A:** 1 mM Copper (II) sulfate in water

**Gradient**

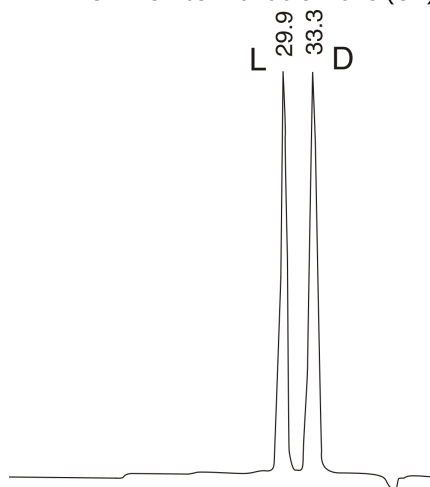
Step No.	Time (min)	Pct A
----------	------------	-------

<b>Profile:</b>	<b>1</b>	0	100
-----------------	----------	---	-----

**Flow Rate:** 0.2 mL/min

**Col. Temp.:** ambient

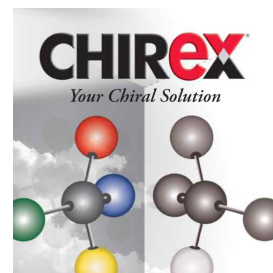
**Detection:** UV-Vis Abs.-Variable Wave.(UV) @ 254 nm (ambient)



$$\alpha = 1.17$$

### ANALYTES:

- 1** L-Serine  
Retention Time: 29.933 min
- 2** D-Serine  
Retention Time: 33.278 min



Products used in this application:

**CHIREX**<sup>®</sup>

