

HPLC Application

ID No.: 14019

Aspartic acid

Column: Chirex® 3126 (D)-penicillamine, LC Column 150 x 4.6 mm, Ea

Dimensions: 150 x 4.6 mm ID

Order No: 00F-3126-E0

Elution Type: Isocratic

Eluent A: 2 mM Copper (II) sulfate in water

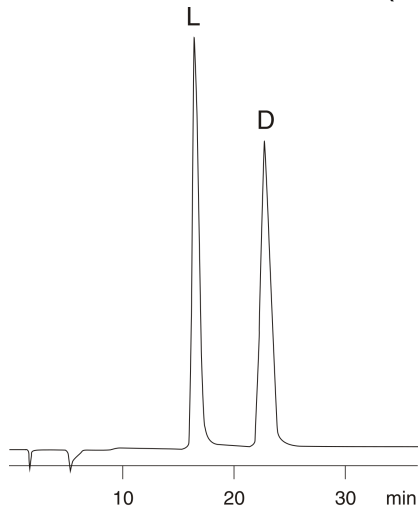
Eluent B: Methanol

Gradient	Step No.	Time (min)	Pct A	Pct B
Profile:	1	0	85	15

Flow Rate: 1 mL/min

Col. Temp.: ambient

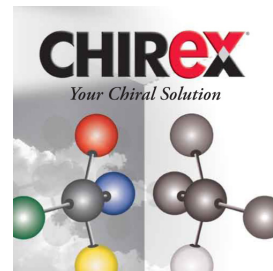
Detection: UV-Vis Abs.-Variable Wave.(UV) @ 254 nm (ambient)



$\alpha = 1.42$

ANALYTES:

- 1 L-Aspartic acid
- 2 D-Aspartic acid



Products used in this application:

CHIREX®

