

# HPLC Application

ID No.: 14027

## Arginine

**Column:** Chirex<sup>®</sup> 3126 (D)-penicillamine, LC Column 150 x 4.6 mm, Ea

**Dimensions:** 150 x 4.6 mm ID

**Order No:** 00F-3126-E0

**Elution Type:** Isocratic

**Eluent A:** 1 mM Copper (II) sulfate in water

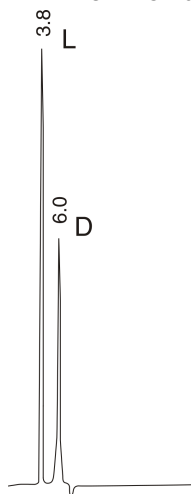
| Gradient | Step No. | Time (min) | Pct A |
|----------|----------|------------|-------|
|----------|----------|------------|-------|

|                 |          |   |     |
|-----------------|----------|---|-----|
| <b>Profile:</b> | <b>1</b> | 0 | 100 |
|-----------------|----------|---|-----|

**Flow Rate:** 1 mL/min

**Col. Temp.:** ambient

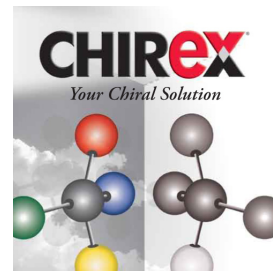
**Detection:** UV-Vis Abs.-Variable Wave.(UV) @ 254 nm (ambient)



$\alpha = 2.15$

### ANALYTES:

- 1** L-Arginine  
Retention Time: 3.81 min
- 2** D-Arginine  
Retention Time: 5.97 min



Products used in this application:

**CHIREX**<sup>®</sup>

