

# HPLC Application

ID No.: 14029

## Norvaline

**Column:** Chirex® 3126 (D)-penicillamine, LC Column 150 x 4.6 mm, Ea

**Dimensions:** 150 x 4.6 mm ID

**Order No:** 00F-3126-E0

**Elution Type:** Isocratic

**Eluent A:** 1 mM Copper (II) sulfate in water

**Gradient**

Step No.	Time (min)	Pct A
----------	------------	-------

<b>Profile:</b>	<b>1</b>	0	100
-----------------	----------	---	-----

**Flow Rate:** 1 mL/min

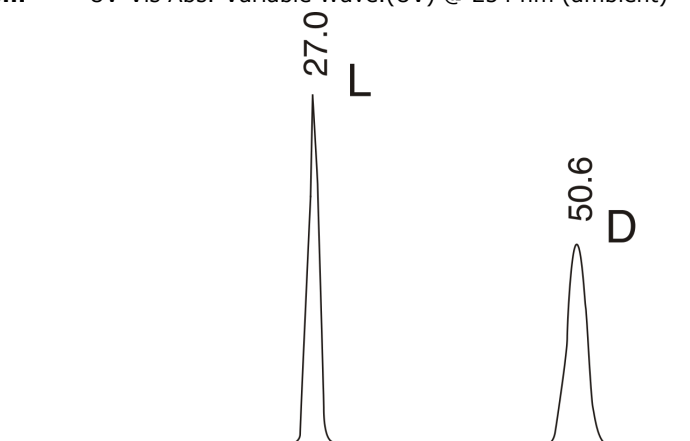
**Col. Temp.:** ambient

**Detection:** UV-Vis Abs.-Variable Wave.(UV) @ 254 nm (ambient)



Products used in this application:

**CHIREX**®



$$\alpha = 1.95$$

### ANALYTES:

- 1** L-Norvaline  
Retention Time: 27.033 min
- 2** D-Norvaline  
Retention Time: 50.167 min

