

HPLC Application

ID No.: 14041

Ornithine

Column: Chirex® 3126 (D)-penicillamine, LC Column 150 x 4.6 mm, Ea

Dimensions: 150 x 4.6 mm ID

Order No: 00F-3126-E0

Elution Type: Isocratic

Eluent A: 1 mM Copper (II) sulfate in water

Gradient

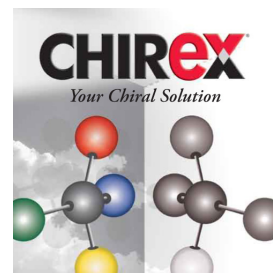
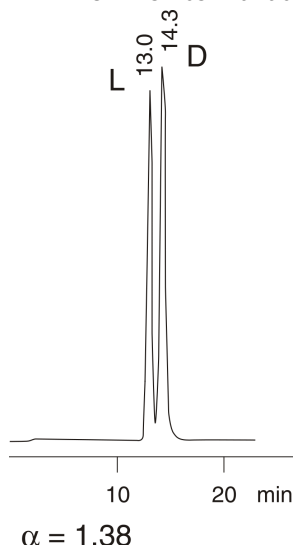
Step No.	Time (min)	Pct A
1	0	100

Profile:

Flow Rate: 0.2 mL/min

Col. Temp.: ambient

Detection: UV-Vis Abs.-Variable Wave.(UV) @ 254 nm (ambient)



Products used in this application:

CHIREX®

ANALYTES:

1 L-Ornithine

Retention Time: 13.833 min

2 D-Ornithine

Retention Time: 14.283 min

