

# HPLC Application

ID No.: 14043

## Threonine

**Column:** Chirex<sup>®</sup> 3126 (D)-penicillamine, LC Column 150 x 4.6 mm, Ea

**Dimensions:** 150 x 4.6 mm ID

**Order No:** 00F-3126-E0

**Elution Type:** Isocratic

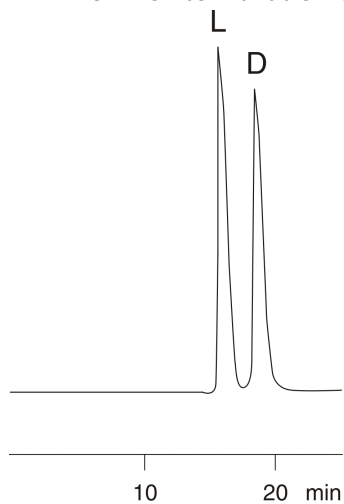
**Eluent A:** 0.5 mM Copper (II) acetate in water

Gradient	Step No.	Time (min)	Pct A
<b>Profile:</b>	<b>1</b>	0	100

**Flow Rate:** 0.5 mL/min

**Col. Temp.:** ambient

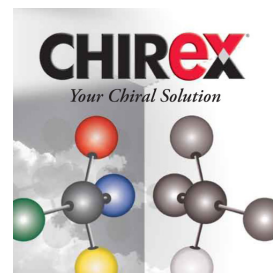
**Detection:** UV-Vis Abs.-Variable Wave.(UV) @ 254 nm (ambient)



$\alpha = 1.20$

### ANALYTES:

- 1 L-Threonine
- 2 D-Threonine



Products used in this application:

**CHIREX**<sup>®</sup>

