

HPLC Application

ID No.: 14047

Glutamic acid

Column: Chirex® 3126 (D)-penicillamine, LC Column 150 x 4.6 mm, Ea

Dimensions: 150 x 4.6 mm ID

Order No: 00F-3126-E0

Elution Type: Isocratic

Eluent A: 2 mM Copper (II) sulfate in water

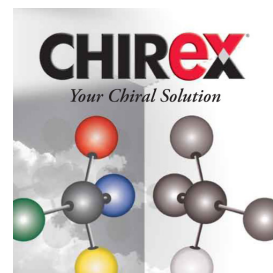
Eluent B: Methanol

Gradient	Step No.	Time (min)	Pct A	Pct B
Profile:	1	0	85	15

Flow Rate: 1 mL/min

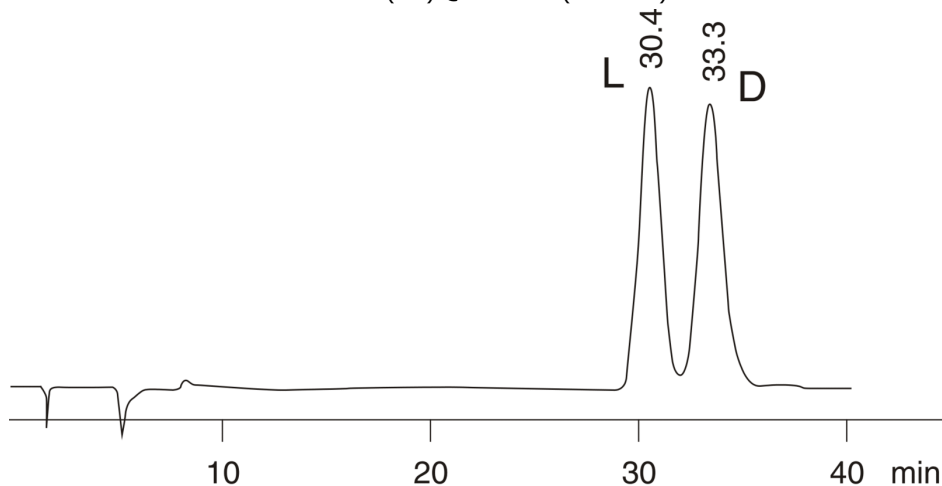
Col. Temp.: ambient

Detection: UV-Vis Abs.-Variable Wave.(UV) @ 254 nm (ambient)



Products used in this application:

CHIREX



$$\alpha = 1.11$$

ANALYTES:

- 1 L-Glutamic acid
Retention Time: 30.433 min
- 2 D-Glutamic acid
Retention Time: 33.317 min

