

# HPLC Application

ID No.: 14052

## N-Acetylalanine

**Column:** Chirex<sup>®</sup> 3126 (D)-penicillamine, LC Column 150 x 4.6 mm, Ea

**Dimensions:** 150 x 4.6 mm ID

**Order No:** 00F-3126-E0

**Elution Type:** Isocratic

**Eluent A:** 2 mM Copper (II) sulfate in water

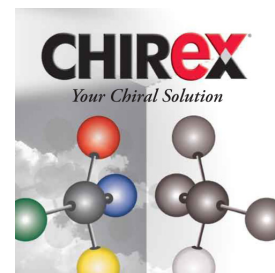
**Eluent B:** Acetonitrile

Gradient	Step No.	Time (min)	Pct A	Pct B
Profile:	1	0	95	5

**Flow Rate:** 1 mL/min

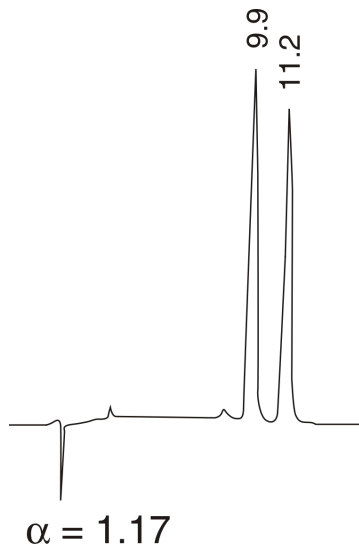
**Col. Temp.:** ambient

**Detection:** UV-Vis Abs.-Variable Wave.(UV) @ 254 nm (ambient)



Products used in this application:

**CHIREX**<sup>®</sup>



### ANALYTES:

- 1 N-Acetylalanine  
Retention Time: 9.85 min
- 2 N-Acetylalanine  
Retention Time: 11.21 min

