

# HPLC Application

ID No.: 14058

## N-Acetylleucine

**Column:** Chirex<sup>®</sup> 3126 (D)-penicillamine, LC Column 150 x 4.6 mm, Ea

**Dimensions:** 150 x 4.6 mm ID

**Order No:** 00F-3126-E0

**Elution Type:** Isocratic

**Eluent A:** 2 mM Copper (II) sulfate in water

**Eluent B:** Acetonitrile

Gradient Profile:	Step No.	Time (min)	Pct A	Pct B
	1	0	85	15

**Flow Rate:** 1 mL/min

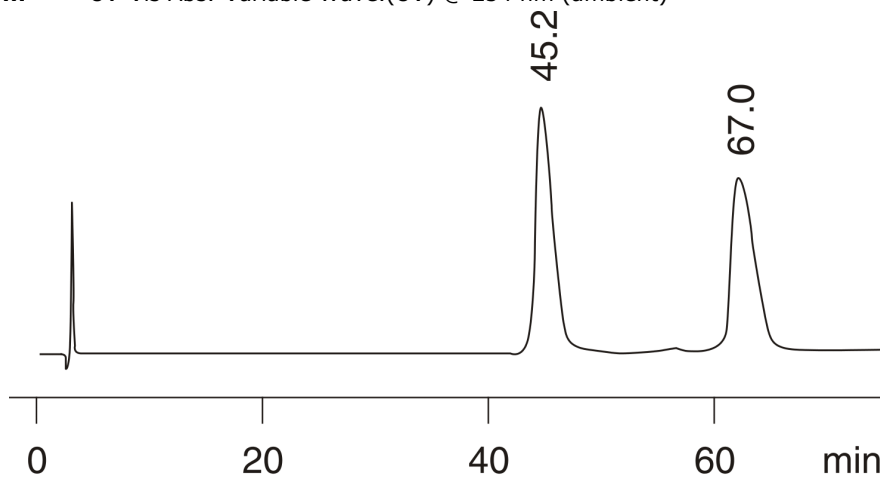
**Col. Temp.:** ambient

**Detection:** UV-Vis Abs.-Variable Wave.(UV) @ 254 nm (ambient)



Products used in this application:

**CHIREX**<sup>®</sup>



$$\alpha = 1.39$$

### ANALYTES:

- 1 N-Acetylleucine  
Retention Time: 45.22 min
- 2 N-Acetylleucine  
Retention Time: 47 min

