

HPLC Application

ID No.: 14061

N-Acetylmethionine

Column: Chirex® (S)-LEU and DNAn, LC Column 250 x 4.6 mm, Ea

Dimensions: 250 x 4.6 mm ID

Order No: 00G-3011-E0

Elution Type: Isocratic

Eluent A: 2 mM Copper (II) sulfate in water

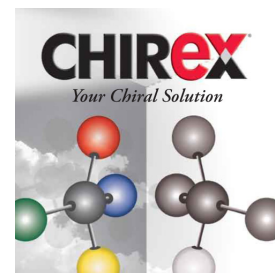
Eluent B: Acetonitrile

Gradient	Step No.	Time (min)	Pct A	Pct B
Profile:	1	0	85	15

Flow Rate: 1 mL/min

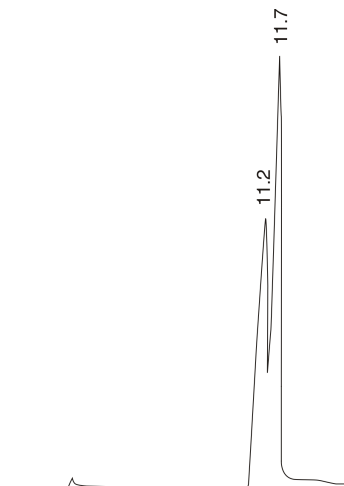
Col. Temp.: ambient

Detection: UV-Vis Abs.-Variable Wave.(UV) @ 230 nm (ambient)



Products used in this application:

CHIREX®



$\alpha = 1.06$

ANALYTES:

- 1 N-Acetylmethionine
Retention Time: 11.21 min
- 2 N-Acetylmethionine
Retention Time: 11.69 min

