

HPLC Application

ID No.: 14066

2,6-Diaminopimelic acid

Column: Chirex® 3126 (D)-penicillamine, LC Column 150 x 4.6 mm, Ea

Dimensions: 150 x 4.6 mm ID

Order No: 00F-3126-E0

Elution Type: Isocratic

Eluent A: 2 mM Copper (II) sulfate in water

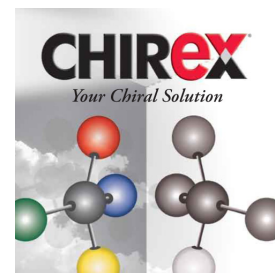
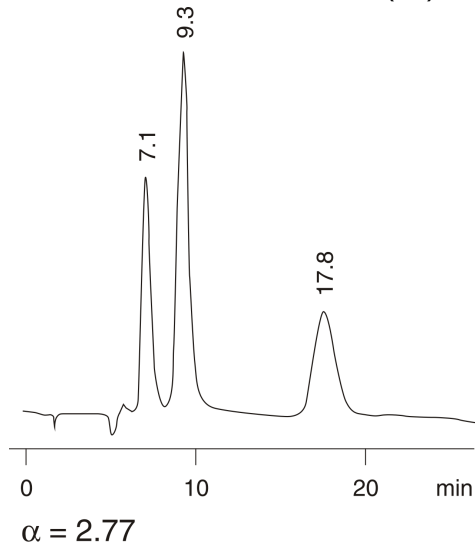
Eluent B: Methanol

Gradient Profile:	Step No.	Time (min)	Pct A	Pct B
	1	0	70	30

Flow Rate: 1 mL/min

Col. Temp.: ambient

Detection: UV-Vis Abs.-Variable Wave.(UV) @ 254 nm (ambient)



Products used in this application:

CHIREX®

ANALYTES:

1 2,6-Diaminopimelic acid

Retention Time: 7.14 min

2 2,6-Diaminopimelic acid

Retention Time: 17.76 min

