

HPLC Application

ID No.: 14074

tert-Leucine

Column: Chirex® 3126 (D)-penicillamine, LC Column 150 x 4.6 mm, Ea

Dimensions: 150 x 4.6 mm ID

Order No: 00F-3126-E0

Elution Type: Isocratic

Eluent A: 2 mM Copper (II) sulfate in water

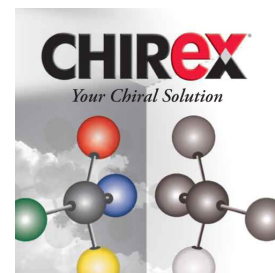
Eluent B: Methanol

Gradient	Step No.	Time (min)	Pct A	Pct B
Profile:	1	0	85	15

Flow Rate: 1 mL/min

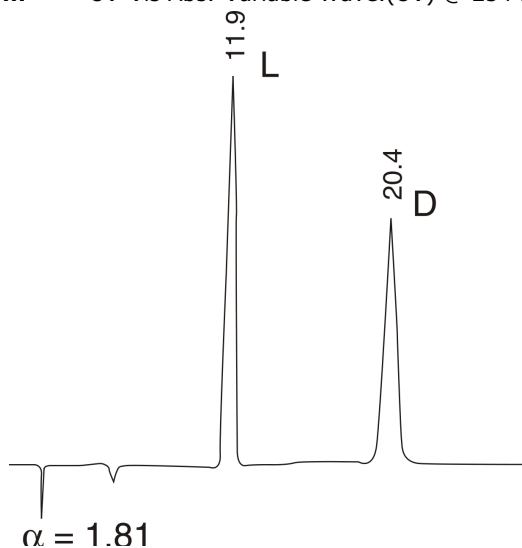
Col. Temp.: ambient

Detection: UV-Vis Abs.-Variable Wave.(UV) @ 254 nm (ambient)



Products used in this application:

CHIREX®



ANALYTES:

- 1 L-tert-Leucine
Retention Time: 11.88 min
- 2 D-tert-Leucine
Retention Time: 20.41 min