

HPLC Application

ID No.: 14082

Alanylglycyl-glycine

Column: Chirex[®] 3126 (D)-penicillamine, LC Column 150 x 4.6 mm, Ea

Dimensions: 150 x 4.6 mm ID

Order No: 00F-3126-E0

Elution Type: Isocratic

Eluent A: 1 mM Copper (II) sulfate in water

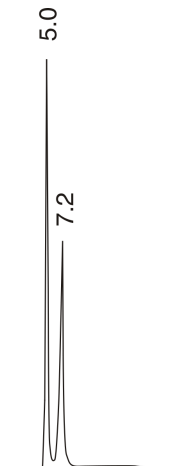
Gradient	Step No.	Time (min)	Pct A
----------	----------	------------	-------

Profile:	1	0	100
-----------------	----------	---	-----

Flow Rate: 1 mL/min

Col. Temp.: ambient

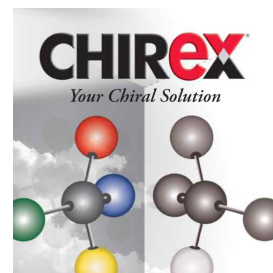
Detection: UV-Vis Abs.-Variable Wave.(UV) @ 254 nm (ambient)



$$\alpha = 1.62$$

ANALYTES:

- 1** Alanylglycyl-glycine
Retention Time: 4.98 min
- 2** Alanylglycyl-glycine
Retention Time: 7.31 min



Products used in this application:

CHIREX[®]

