

HPLC Application

ID No.: 14085

Cystine

Column: Chirex® 3126 (D)-penicillamine, LC Column 150 x 4.6 mm, Ea

Dimensions: 150 x 4.6 mm ID

Order No: 00F-3126-E0

Elution Type: Isocratic

Eluent A: 2 mM Copper (II) sulfate in water

Eluent B: Isopropanol

Gradient Profile:	Step No.	Time (min)	Pct A	Pct B
	1	0	95	5

Flow Rate: 1 mL/min

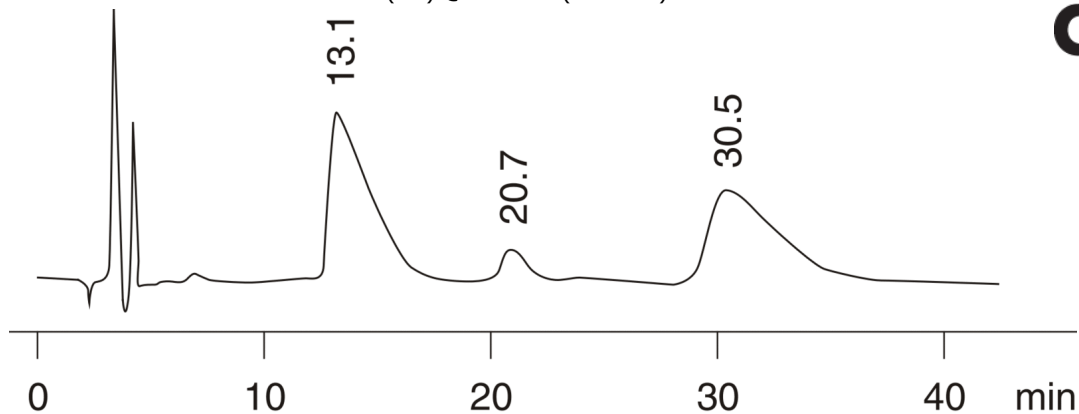
Col. Temp.: ambient

Detection: UV-Vis Abs.-Variable Wave.(UV) @ 254 nm (ambient)



Products used in this application:

CHIREX®



$$\alpha = 2.47$$

ANALYTES:

- 1 Cystine
Retention Time: 13.1 min
- 2 Cystine
Retention Time: 20.77 min
- 3 Cystine
Retention Time: 30.7 min