

HPLC Application

ID No.: 14089

1-Aminoethylphosphonic acid

Column: Chirex[®] 3126 (D)-penicillamine, LC Column 150 x 4.6 mm, Ea

Dimensions: 150 x 4.6 mm ID

Order No: 00F-3126-E0

Elution Type: Isocratic

Eluent A: 2 mM Copper (II) sulfate in water

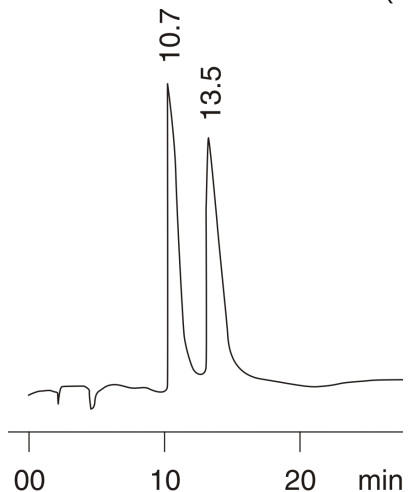
Eluent B: Acetonitrile

Gradient Profile:	Step No.	Time (min)	Pct A	Pct B
	1	0	95	5

Flow Rate: 1 mL/min

Col. Temp.: ambient

Detection: UV-Vis Abs.-Variable Wave.(UV) @ 254 nm (ambient)



$\alpha = 1.30$

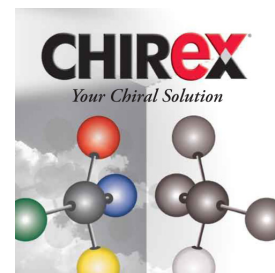
ANALYTES:

1 1-Aminoethylphosphonic acid

Retention Time: 10.733 min

2 1-Aminoethylphosphonic acid

Retention Time: 13.548 min



Products used in this application:

CHIREX[®]

